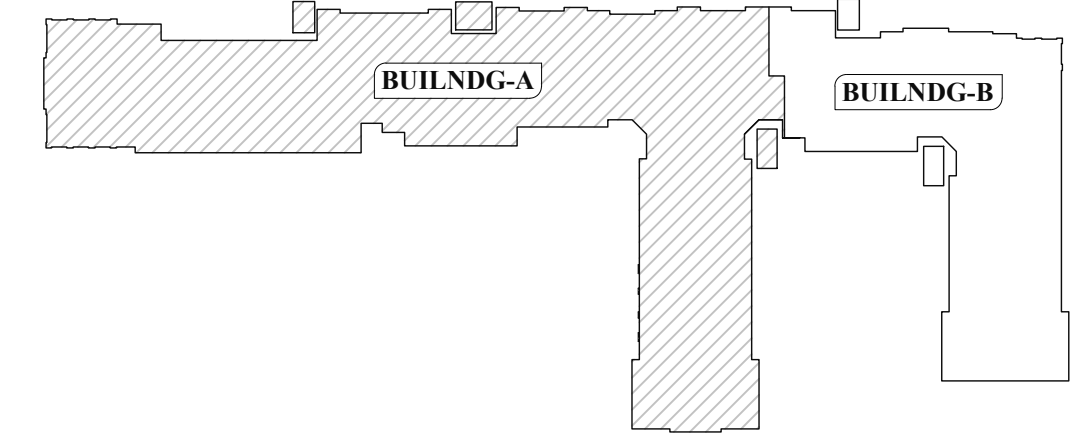


(PERIMETER THICKENED REINFORCEMENT DETAILS)
FOUNDATION REINFORCEMENT DETAILS : (BLDG-A)
 SCALE : 1/12"=1'-0"
 REF : S101A, S101B, A111A & A111B

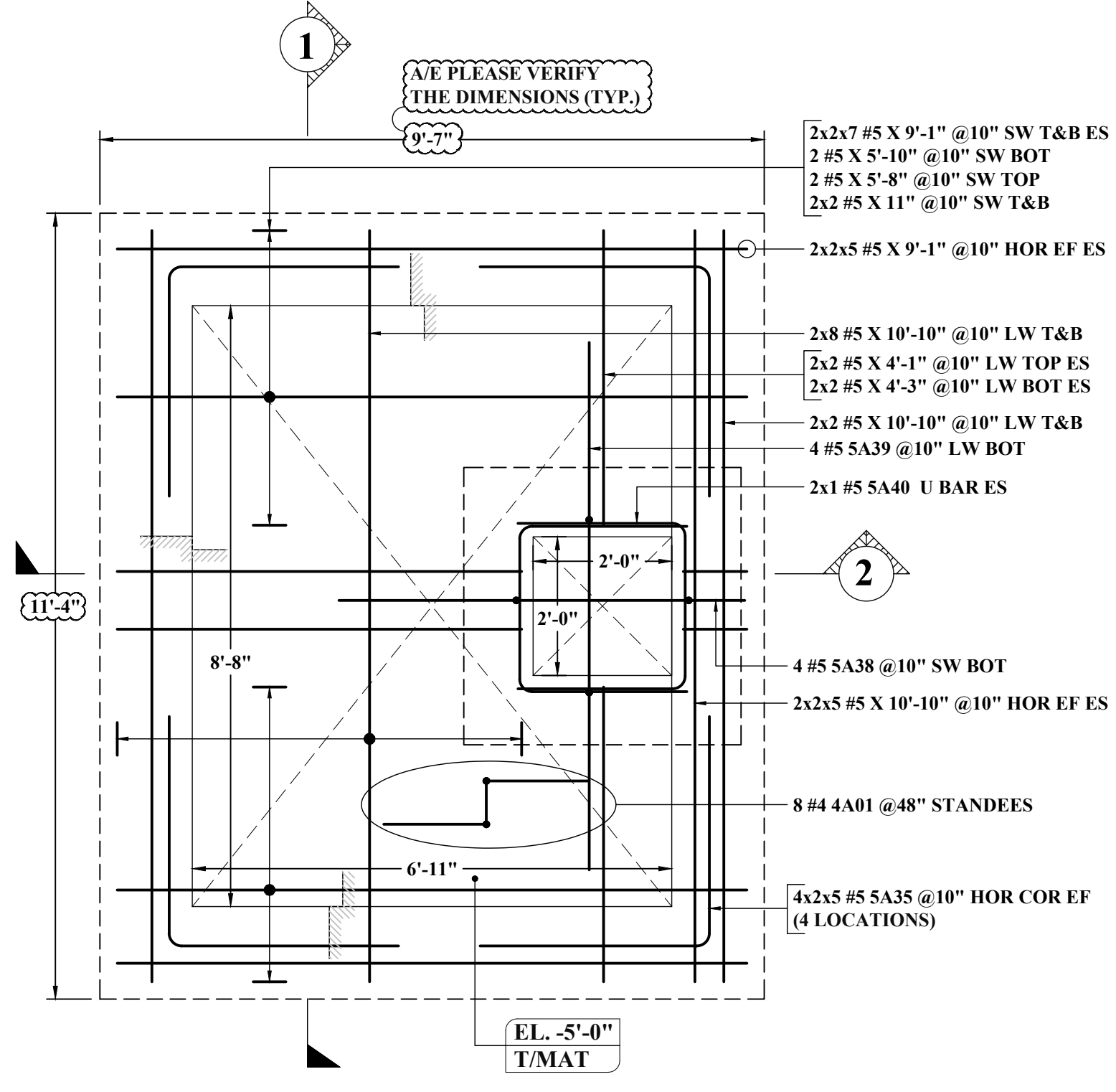


KEY PLAN
 SCALE : NTS
 REF : S101A & S101B

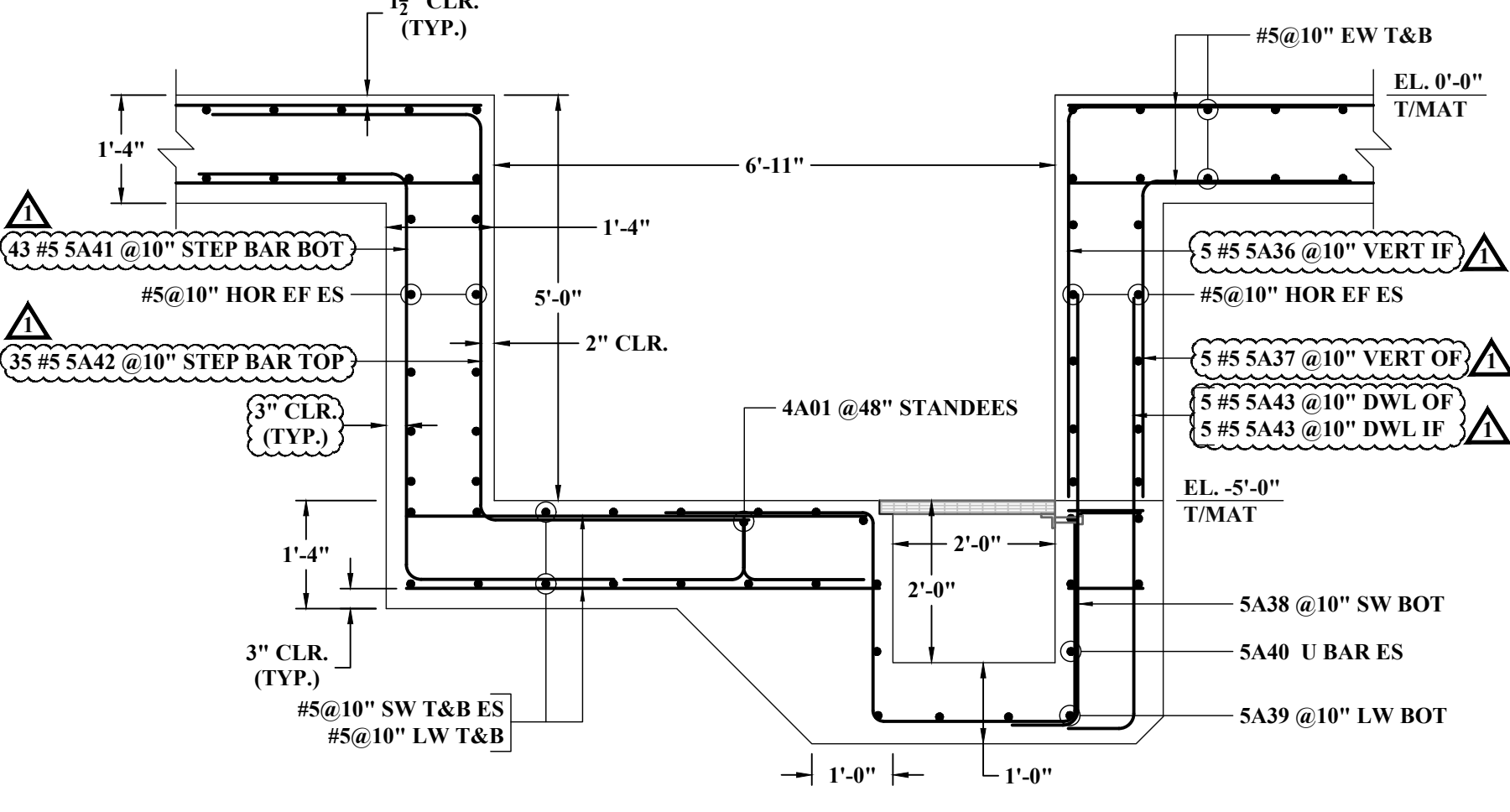
| ABBREVIATIONS | |
|----------------|--------|
| TOP | - |
| BOTTOM | BOT |
| TOP&BOTTOM | T&B |
| CONTINUOUS | CONT |
| FACE BAR | - |
| CORNER BAR | COR |
| VERTICAL | VERT |
| HORIZONTAL | HOR |
| STIRRUPS | STIRR |
| EACH WAY | EW |
| EACH FACE | EF |
| INNER FACE | IF |
| OUTER FACE | OF |
| EACH SIDE | ES |
| MASONRY | M |
| DOWEL | DWL |
| DOWEL/VERTICAL | D/V |
| TRANSVERSE | TRANS |
| LONG WAY BAR | LW |
| SHORT WAY BAR | SW |
| MATCH LINE | M LINE |

| LAP SCHEDULE (CLASS-B) | | |
|------------------------|-----|-------|
| REF: 10/S500 | | |
| 4000 PSI | | |
| SIZE | TOP | OTHER |
| #3 | 24" | 18" |
| #4 | 32" | 25" |
| #5 | 40" | 31" |
| #6 | 48" | 37" |
| #7 | 70" | 54" |
| #8 | 80" | 62" |
| #9 | 90" | 69" |

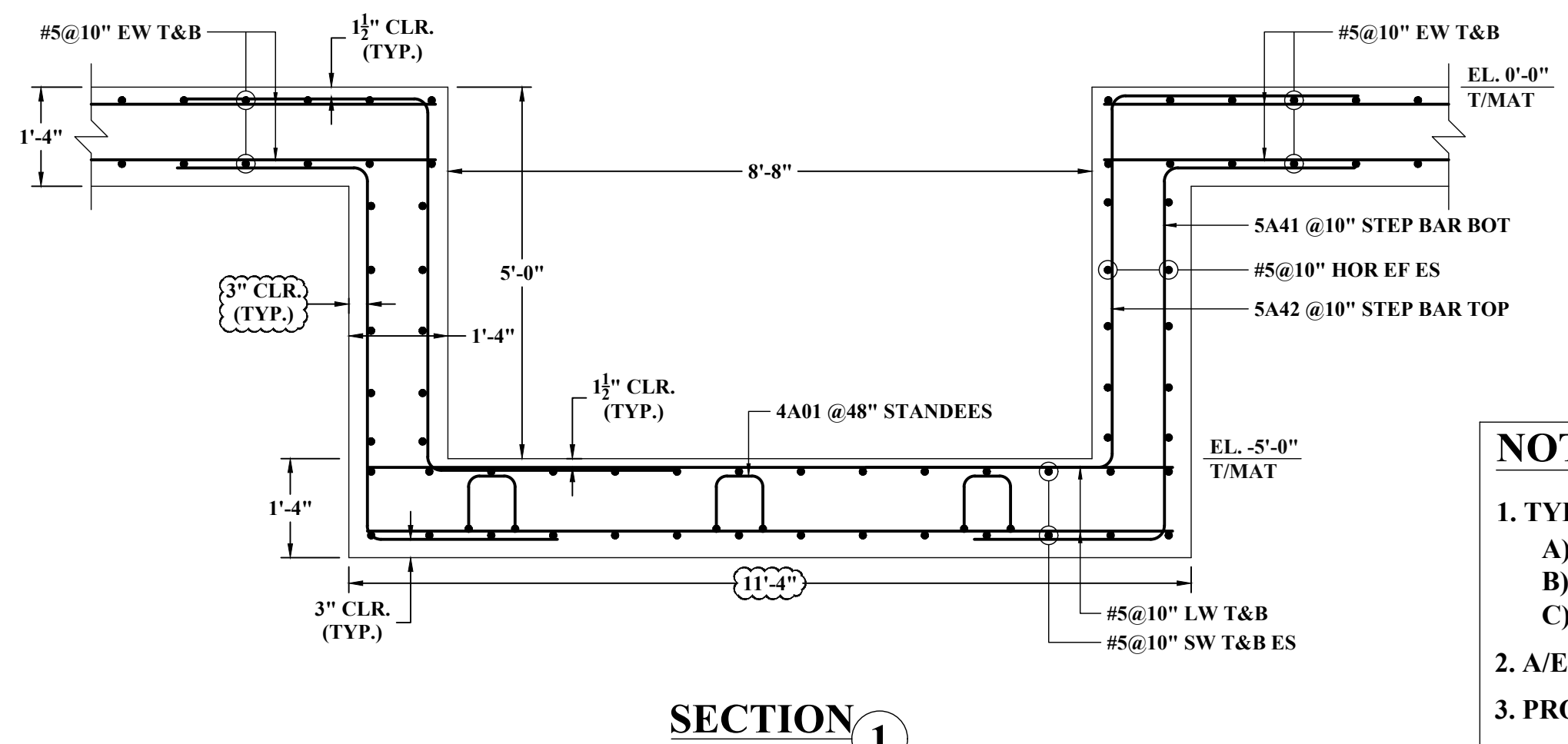
- NOTES:-**
- TYPICAL CLEARANCES
 A). TOP - 1 1/2"
 B). BOTTOM - 3"
 C). SIDES - 3"
 - A/E PLEASE VERIFY THE ALL CLOUDED ITEMS
 - PROVIDE FIELD CUT AS REQUIRED LOCATIONS
 - BAR TO BE PLACED AT EQUAL SPACING U.O.N.
 - TILT HOOK TO ACCOMMODATE THE COVER, IF NEED



(ELEVATOR PIT REINFORCEMENT DETAILS)
DETAIL-A
 SCALE : 1/2"=1'-0"
 REF : S101A & 1/A321

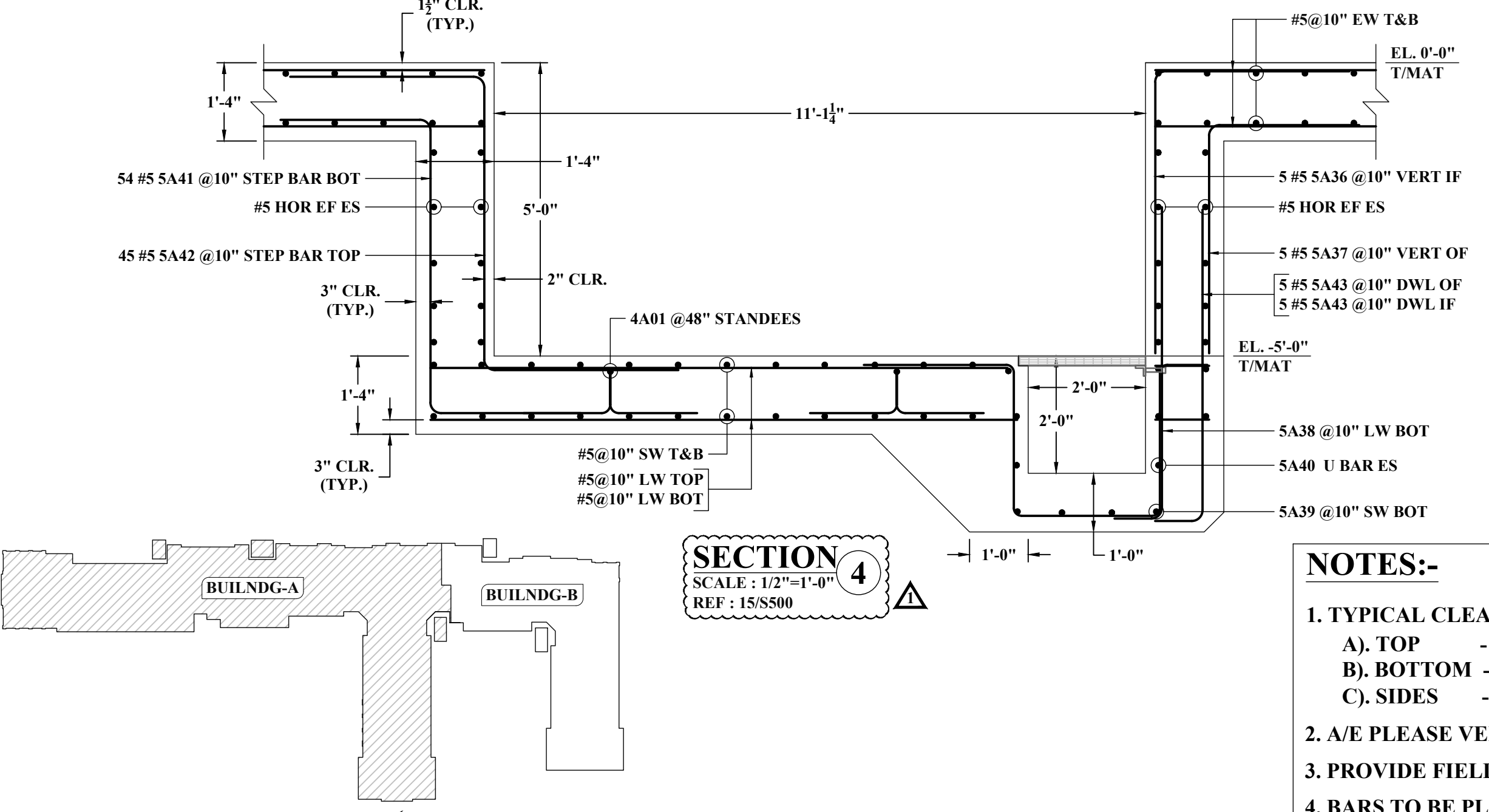
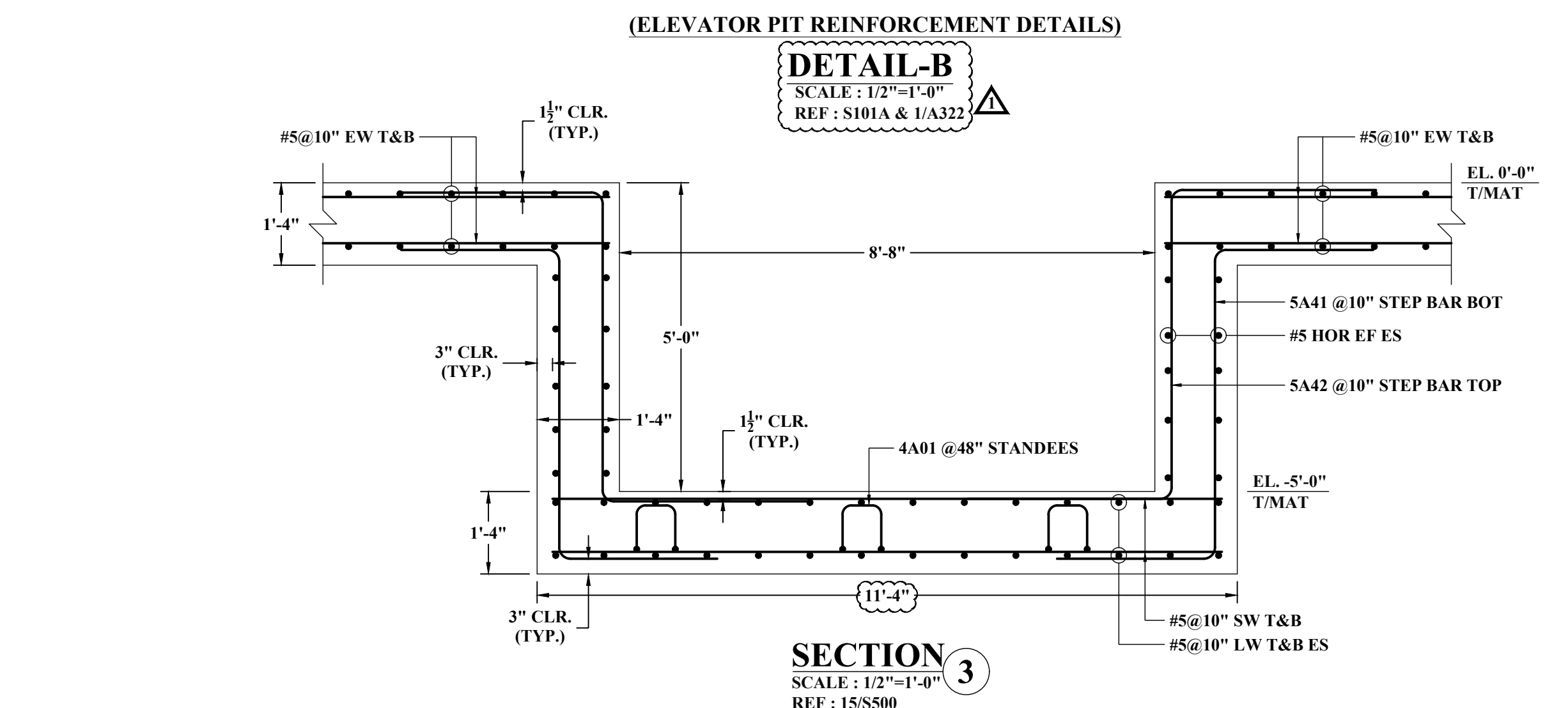
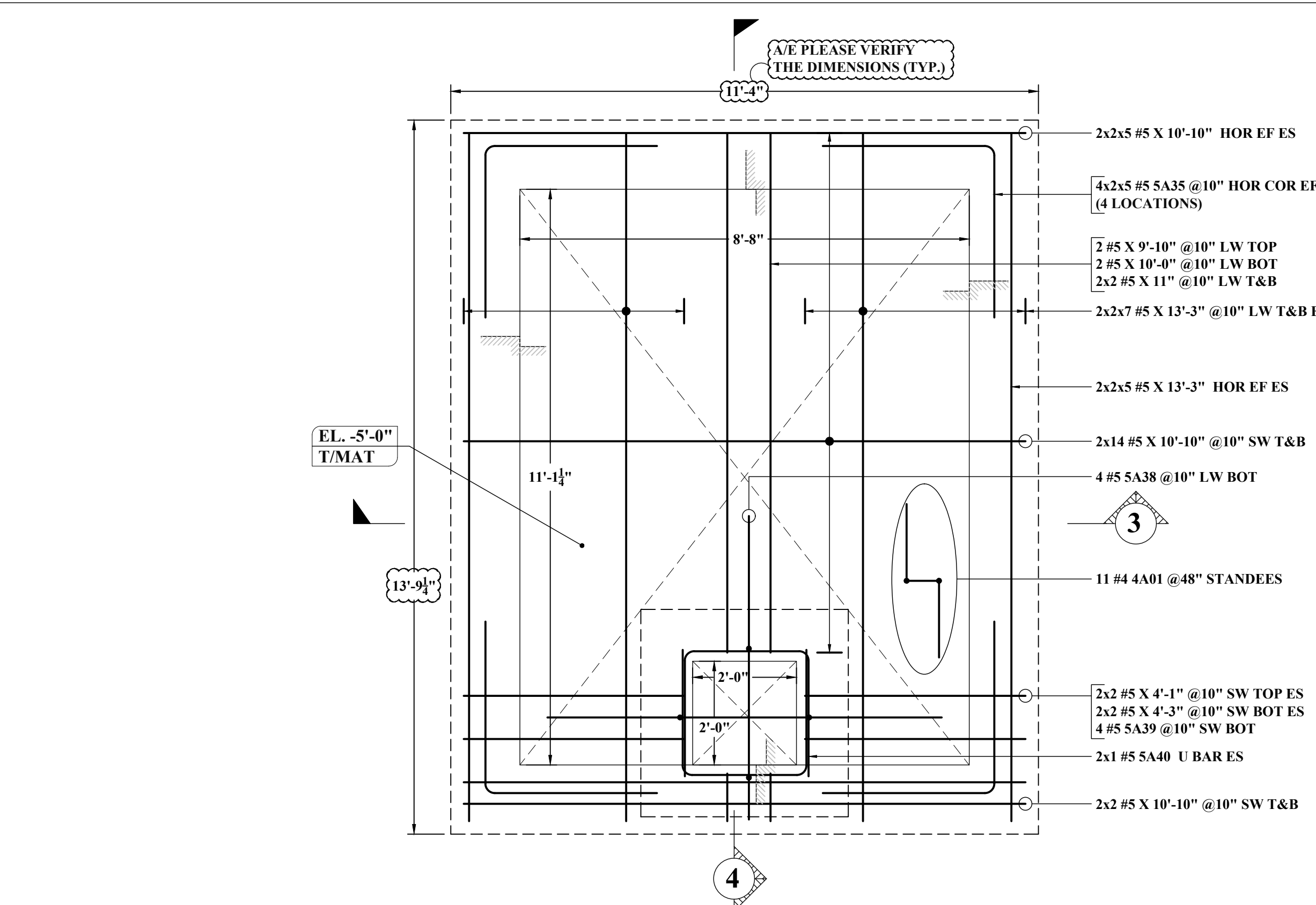
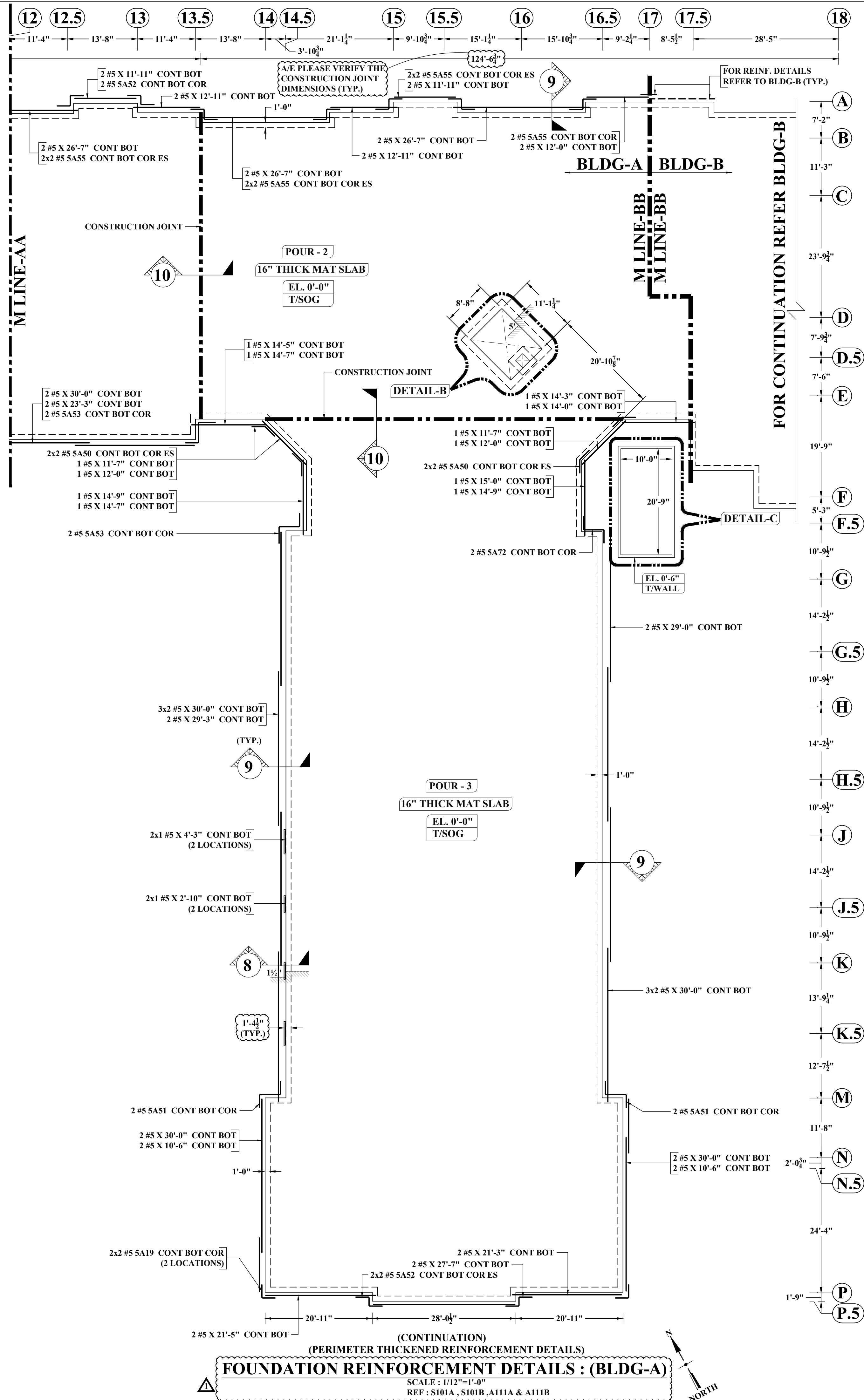


SECTION 2
 SCALE : 1/2"=1'-0"
 REF : 15/S500



SECTION 1
 SCALE : 1/2"=1'-0"
 REF : 15/S500

ALL BARS IN THIS DRAWING ASTM A615 GRADE 60 BLACK UNCOATED



LAP SCHEDULE (CLASS-B)
REF: 10/S500

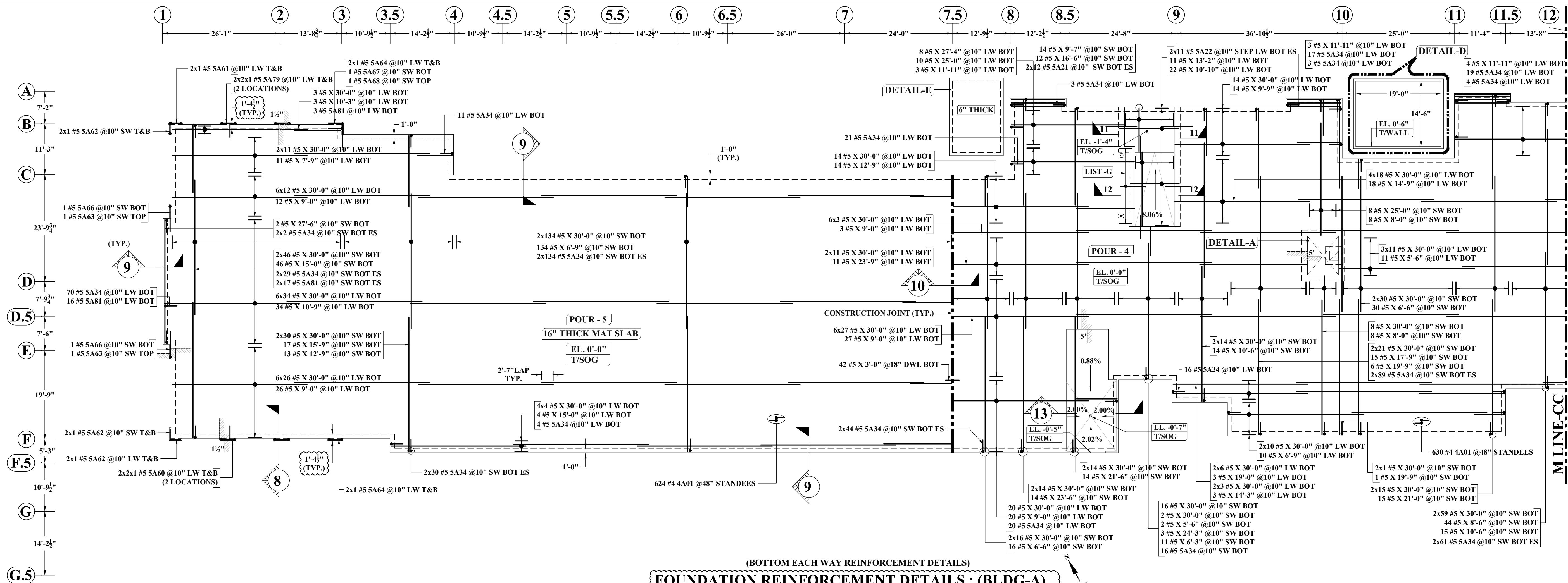
| SIZE | 4000 PSI | |
|------|----------|-------|
| | TOP | OTHER |
| #3 | 24" | 18" |
| #4 | 32" | 25" |
| #5 | 40" | 31" |
| #6 | 48" | 37" |
| #7 | 70" | 54" |
| #8 | 80" | 62" |
| #9 | 90" | 69" |

ABBREVIATIONS

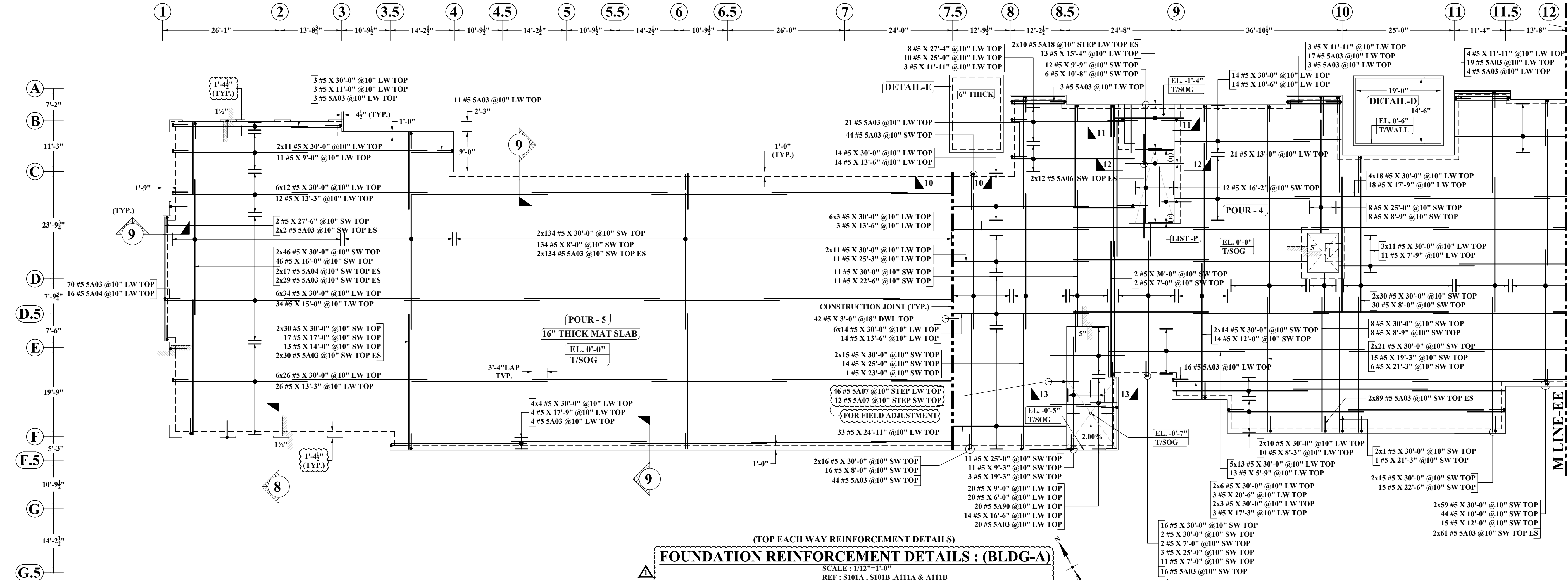
| | |
|----------------|--------|
| TOP | - |
| BOTTOM | BOT |
| TOP&BOTTOM | T&B |
| CONTINUOUS | CONT |
| FACE BAR | - |
| CORNER BAR | COR |
| VERTICAL | VERT |
| HORIZONTAL | HOR |
| STIRRUPS | STIRR |
| EACH WAY | EW |
| EACH FACE | EF |
| INNER FACE | IF |
| OUTER FACE | OF |
| EACH SIDE | ES |
| MASONRY | M |
| DOWEL | DWL |
| DOWEL/VERTICAL | D/V |
| TRANSVERSE | TRANS |
| LONG WAY BAR | LW |
| SHORT WAY BAR | SW |
| MATCH LINE | M LINE |

- NOTES:-**
- TYPICAL CLEARANCES
A). TOP - 1 1/2"
B). BOTTOM - 3"
C). SIDES - 3"
 - A/E PLEASE VERIFY THE ALL CLOUDED ITEMS
 - PROVIDE FIELD CUT AS REQUIRED LOCATIONS
 - BAR TO BE PLACED AT EQUAL SPACING U.O.N.
 - TILT HOOK TO ACCOMMODATE THE COVER, IF NEED

ALL BARS IN THIS DRAWING ASTM A615 GRADE 60 BLACK UNCOATED



(BOTTOM EACH WAY REINFORCEMENT DETAILS)
FOUNDATION REINFORCEMENT DETAILS : (BLDG-A)
 SCALE: 1/12"=1'-0"
 REF: S101A, S101B, A111A & A111B



(TOP EACH WAY REINFORCEMENT DETAILS)
FOUNDATION REINFORCEMENT DETAILS : (BLDG-A)
 SCALE: 1/12"=1'-0"
 REF: S101A, S101B, A111A & A111B

LAP SCHEDULE (CLASS-B)
 REF: 10/S500

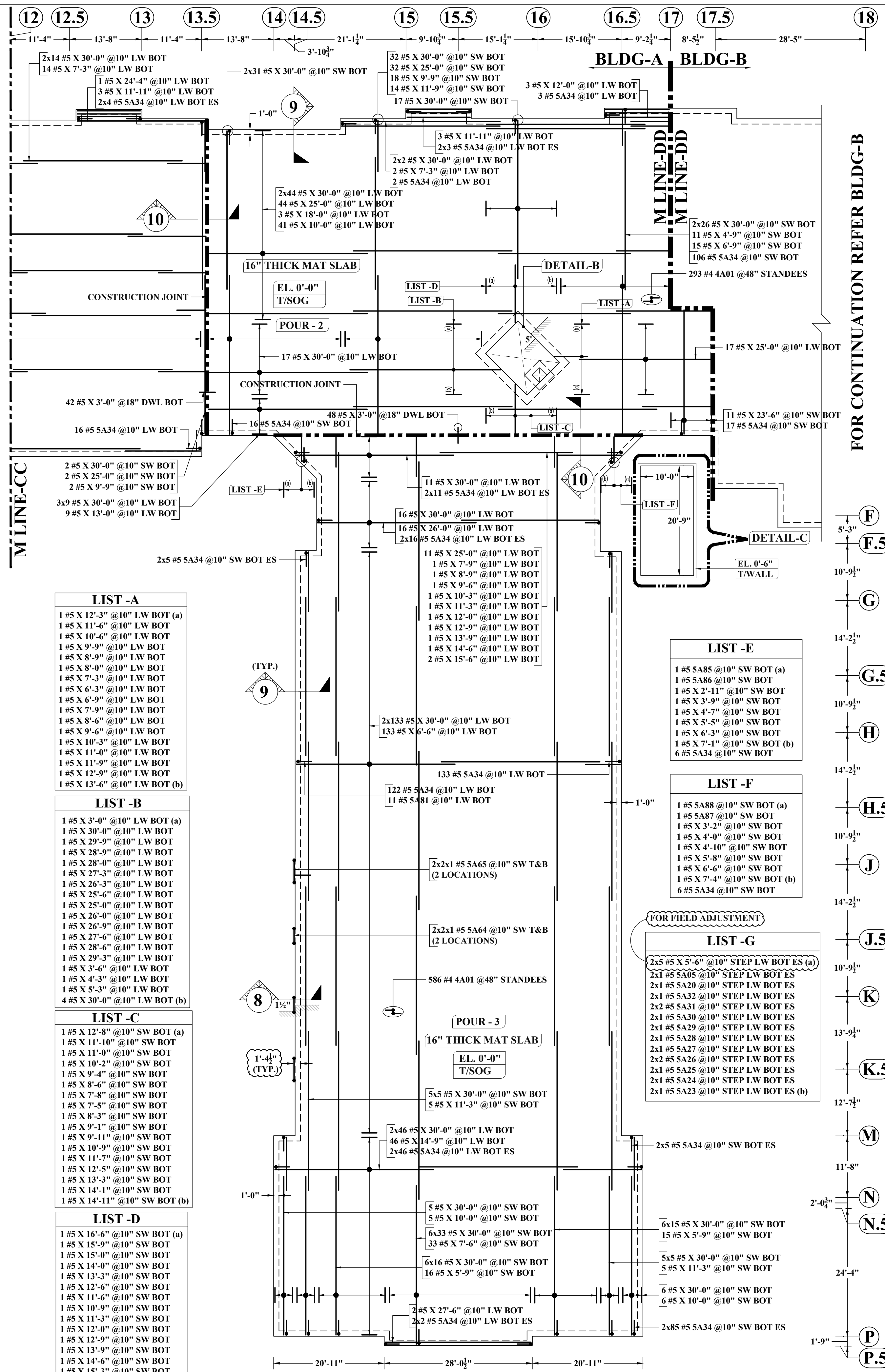
| SIZE | 4000 PSI | |
|------|----------|-------|
| | TOP | OTHER |
| #3 | 24" | 18" |
| #4 | 32" | 25" |
| #5 | 40" | 31" |
| #6 | 48" | 37" |
| #7 | 70" | 54" |
| #8 | 80" | 62" |
| #9 | 90" | 69" |

ABBREVIATIONS

| | |
|----------------|--------|
| TOP | - |
| BOTTOM | BOT |
| TOP&BOTTOM | T&B |
| CONTINUOUS | CONT |
| FACE BAR | - |
| CORNER BAR | COR |
| VERTICAL | VERT |
| HORIZONTAL | HOR |
| STIRRUPS | STIRR |
| EACH WAY | EW |
| EACH FACE | EF |
| INNER FACE | IF |
| OUTER FACE | OF |
| EACH SIDE | ES |
| MASONRY | M |
| DOWEL | DWL |
| DOWEL/VERTICAL | D/V |
| TRANSVERSE | TRANS |
| LONG WAY BAR | LW |
| SHORT WAY BAR | SW |
| MATCH LINE | M LINE |

ALL BARS IN THIS DRAWING ASTM A615 GRADE 60 BLACK UNCOATED

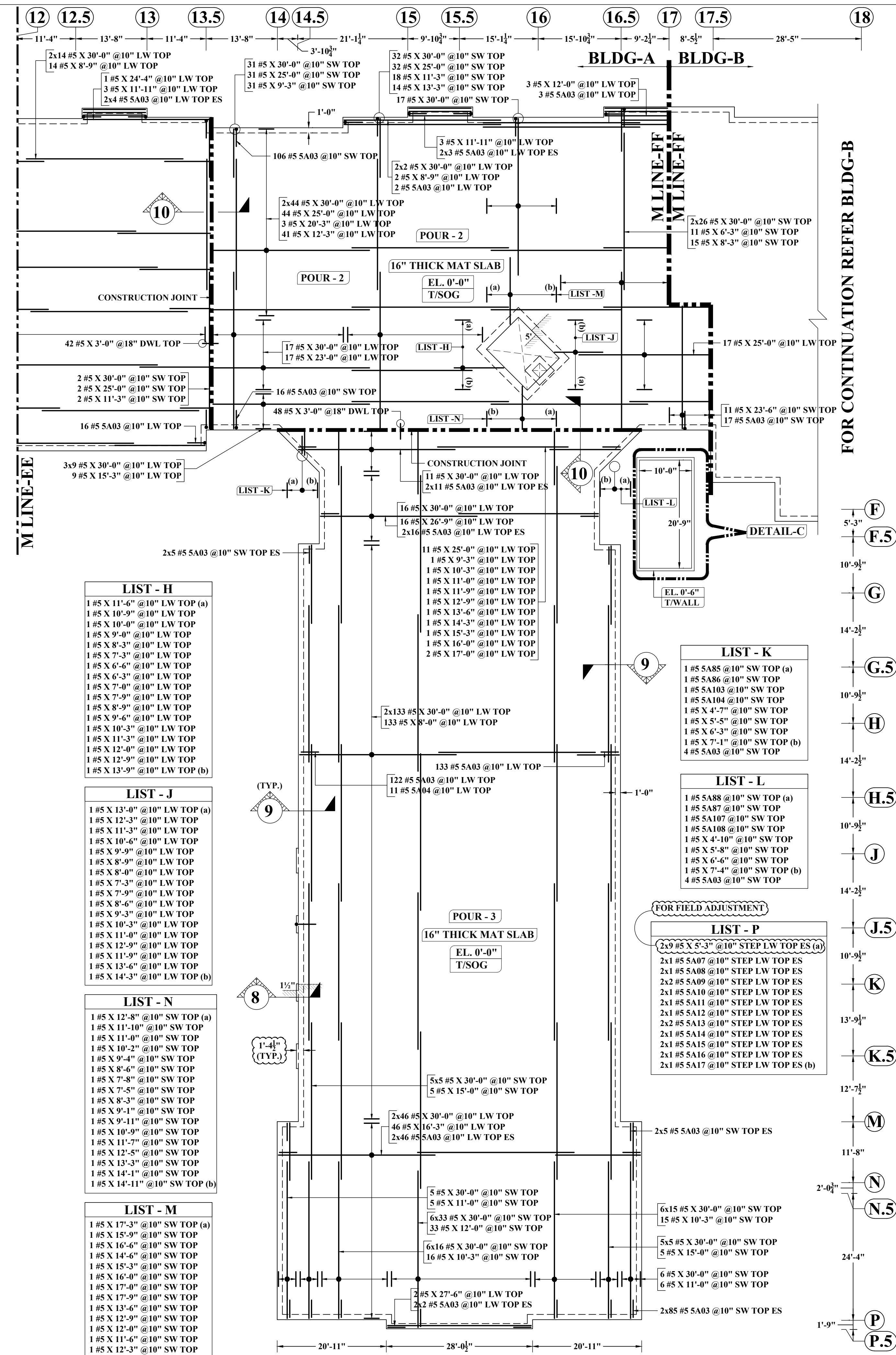
NOTE: REINFORCING STEEL PLACING DRAWINGS TO BE USED ONLY IN CONJUNCTION WITH CONTRACT DRAWINGS AND SPECIFICATIONS. ELEVATIONS & DIMENSIONS SHOWN ON THIS DRAWING ARE FOR VERIFICATION BY THE EOR OR FOR DETAILING PURPOSES ONLY AND SHOULD NOT BE USED FOR CONSTRUCTION UNLESS VERIFIED BY THE ARCHITECT, ENGINEER OF RECORD, OR CONTRACTOR.



- LIST - A**
- 1 #5 X 12'-3" @ 10" LW BOT (a)
 - 1 #5 X 11'-6" @ 10" LW BOT
 - 1 #5 X 10'-6" @ 10" LW BOT
 - 1 #5 X 9'-9" @ 10" LW BOT
 - 1 #5 X 8'-9" @ 10" LW BOT
 - 1 #5 X 8'-0" @ 10" LW BOT
 - 1 #5 X 7'-3" @ 10" LW BOT
 - 1 #5 X 6'-3" @ 10" LW BOT
 - 1 #5 X 6'-9" @ 10" LW BOT
 - 1 #5 X 7'-9" @ 10" LW BOT
 - 1 #5 X 8'-6" @ 10" LW BOT
 - 1 #5 X 9'-6" @ 10" LW BOT
 - 1 #5 X 10'-3" @ 10" LW BOT
 - 1 #5 X 11'-0" @ 10" LW BOT
 - 1 #5 X 11'-9" @ 10" LW BOT
 - 1 #5 X 12'-9" @ 10" LW BOT
 - 1 #5 X 13'-6" @ 10" LW BOT (b)
- LIST - B**
- 1 #5 X 3'-0" @ 10" LW BOT (a)
 - 1 #5 X 3'-0" @ 10" LW BOT
 - 1 #5 X 2'-9" @ 10" LW BOT
 - 1 #5 X 2'-9" @ 10" LW BOT
 - 1 #5 X 2'-8" @ 10" LW BOT
 - 1 #5 X 2'-7" @ 10" LW BOT
 - 1 #5 X 2'-6" @ 10" LW BOT
 - 1 #5 X 2'-5" @ 10" LW BOT
 - 1 #5 X 2'-5" @ 10" LW BOT
 - 1 #5 X 2'-4" @ 10" LW BOT
 - 1 #5 X 2'-3" @ 10" LW BOT
 - 1 #5 X 2'-3" @ 10" LW BOT (b)
- LIST - C**
- 1 #5 X 12'-8" @ 10" SW BOT (a)
 - 1 #5 X 11'-10" @ 10" SW BOT
 - 1 #5 X 11'-0" @ 10" SW BOT
 - 1 #5 X 10'-2" @ 10" SW BOT
 - 1 #5 X 9'-4" @ 10" SW BOT
 - 1 #5 X 8'-6" @ 10" SW BOT
 - 1 #5 X 7'-8" @ 10" SW BOT
 - 1 #5 X 7'-5" @ 10" SW BOT
 - 1 #5 X 8'-3" @ 10" SW BOT
 - 1 #5 X 9'-1" @ 10" SW BOT
 - 1 #5 X 9'-11" @ 10" SW BOT
 - 1 #5 X 10'-9" @ 10" SW BOT
 - 1 #5 X 11'-7" @ 10" SW BOT
 - 1 #5 X 12'-5" @ 10" SW BOT
 - 1 #5 X 13'-3" @ 10" SW BOT
 - 1 #5 X 14'-1" @ 10" SW BOT
 - 1 #5 X 14'-11" @ 10" SW BOT (b)
- LIST - D**
- 1 #5 X 16'-4" @ 10" SW BOT (a)
 - 1 #5 X 15'-9" @ 10" SW BOT
 - 1 #5 X 15'-0" @ 10" SW BOT
 - 1 #5 X 14'-0" @ 10" SW BOT
 - 1 #5 X 13'-3" @ 10" SW BOT
 - 1 #5 X 12'-6" @ 10" SW BOT
 - 1 #5 X 11'-6" @ 10" SW BOT
 - 1 #5 X 10'-9" @ 10" SW BOT
 - 1 #5 X 11'-3" @ 10" SW BOT
 - 1 #5 X 12'-0" @ 10" SW BOT
 - 1 #5 X 12'-9" @ 10" SW BOT
 - 1 #5 X 13'-9" @ 10" SW BOT
 - 1 #5 X 14'-6" @ 10" SW BOT
 - 1 #5 X 15'-3" @ 10" SW BOT
 - 1 #5 X 16'-3" @ 10" SW BOT
 - 1 #5 X 17'-9" @ 10" SW BOT (b)
- LIST - E**
- 1 #5 SA85 @ 10" SW BOT (a)
 - 1 #5 SA86 @ 10" SW BOT
 - 1 #5 X 3'-9" @ 10" SW BOT
 - 1 #5 X 3'-9" @ 10" SW BOT
 - 1 #5 X 5'-5" @ 10" SW BOT
 - 1 #5 X 6'-3" @ 10" SW BOT
 - 1 #5 X 7'-1" @ 10" SW BOT (b)
 - 6 #5 SA34 @ 10" SW BOT
- LIST - F**
- 1 #5 SA88 @ 10" SW BOT (a)
 - 1 #5 SA87 @ 10" SW BOT
 - 1 #5 X 3'-2" @ 10" SW BOT
 - 1 #5 X 4'-0" @ 10" SW BOT
 - 1 #5 X 4'-10" @ 10" SW BOT
 - 1 #5 X 5'-8" @ 10" SW BOT
 - 1 #5 X 6'-6" @ 10" SW BOT
 - 1 #5 X 7'-4" @ 10" SW BOT (b)
 - 6 #5 SA34 @ 10" SW BOT
- LIST - G**
- FOR FIELD ADJUSTMENT
- 2x5 #5 X 5'-6" @ 10" STEP LW BOT ES (a)
 - 2x1 #5 SA05 @ 10" STEP LW BOT ES
 - 2x1 #5 SA20 @ 10" STEP LW BOT ES
 - 2x1 #5 SA32 @ 10" STEP LW BOT ES
 - 2x2 #5 SA31 @ 10" STEP LW BOT ES
 - 2x1 #5 SA30 @ 10" STEP LW BOT ES
 - 2x1 #5 SA29 @ 10" STEP LW BOT ES
 - 2x1 #5 SA28 @ 10" STEP LW BOT ES
 - 2x1 #5 SA27 @ 10" STEP LW BOT ES
 - 2x2 #5 SA26 @ 10" STEP LW BOT ES
 - 2x1 #5 SA25 @ 10" STEP LW BOT ES
 - 2x1 #5 SA24 @ 10" STEP LW BOT ES
 - 2x1 #5 SA23 @ 10" STEP LW BOT ES (b)
- LIST - H**
- 1 #5 X 11'-6" @ 10" LW TOP (a)
 - 1 #5 X 10'-0" @ 10" LW TOP
 - 1 #5 X 10'-0" @ 10" LW TOP
 - 1 #5 X 9'-0" @ 10" LW TOP
 - 1 #5 X 8'-3" @ 10" LW TOP
 - 1 #5 X 7'-3" @ 10" LW TOP
 - 1 #5 X 6'-6" @ 10" LW TOP
 - 1 #5 X 6'-3" @ 10" LW TOP
 - 1 #5 X 7'-0" @ 10" LW TOP
 - 1 #5 X 7'-9" @ 10" LW TOP
 - 1 #5 X 8'-9" @ 10" LW TOP
 - 1 #5 X 9'-6" @ 10" LW TOP
 - 1 #5 X 10'-3" @ 10" LW TOP
 - 1 #5 X 11'-0" @ 10" LW TOP
 - 1 #5 X 11'-9" @ 10" LW TOP
 - 1 #5 X 12'-9" @ 10" LW TOP
 - 1 #5 X 13'-6" @ 10" LW TOP
 - 1 #5 X 14'-3" @ 10" LW TOP
 - 1 #5 X 15'-0" @ 10" LW TOP (b)
- LIST - J**
- 1 #5 X 13'-0" @ 10" LW TOP (a)
 - 1 #5 X 12'-3" @ 10" LW TOP
 - 1 #5 X 11'-3" @ 10" LW TOP
 - 1 #5 X 10'-6" @ 10" LW TOP
 - 1 #5 X 9'-9" @ 10" LW TOP
 - 1 #5 X 8'-9" @ 10" LW TOP
 - 1 #5 X 8'-0" @ 10" LW TOP
 - 1 #5 X 7'-3" @ 10" LW TOP
 - 1 #5 X 7'-9" @ 10" LW TOP
 - 1 #5 X 8'-4" @ 10" LW TOP
 - 1 #5 X 9'-3" @ 10" LW TOP
 - 1 #5 X 10'-3" @ 10" LW TOP
 - 1 #5 X 11'-9" @ 10" LW TOP
 - 1 #5 X 12'-9" @ 10" LW TOP
 - 1 #5 X 13'-6" @ 10" LW TOP
 - 1 #5 X 14'-3" @ 10" LW TOP (b)
- LIST - K**
- 1 #5 SA88 @ 10" SW TOP (a)
 - 1 #5 SA87 @ 10" SW TOP
 - 1 #5 SA107 @ 10" SW TOP
 - 1 #5 SA108 @ 10" SW TOP
 - 1 #5 X 4'-10" @ 10" SW TOP
 - 1 #5 X 5'-8" @ 10" SW TOP
 - 1 #5 X 6'-6" @ 10" SW TOP
 - 1 #5 X 7'-1" @ 10" SW TOP (b)
 - 4 #5 SA03 @ 10" SW TOP
- LIST - L**
- 1 #5 SA88 @ 10" SW TOP (a)
 - 1 #5 SA87 @ 10" SW TOP
 - 1 #5 SA107 @ 10" SW TOP
 - 1 #5 SA108 @ 10" SW TOP
 - 1 #5 X 4'-10" @ 10" SW TOP
 - 1 #5 X 5'-8" @ 10" SW TOP
 - 1 #5 X 6'-6" @ 10" SW TOP
 - 1 #5 X 7'-1" @ 10" SW TOP (b)
 - 4 #5 SA03 @ 10" SW TOP
- LIST - M**
- 1 #5 X 17'-3" @ 10" SW TOP (a)
 - 1 #5 X 15'-9" @ 10" SW TOP
 - 1 #5 X 16'-6" @ 10" SW TOP
 - 1 #5 X 14'-6" @ 10" SW TOP
 - 1 #5 X 15'-3" @ 10" SW TOP
 - 1 #5 X 16'-0" @ 10" SW TOP
 - 1 #5 X 17'-0" @ 10" SW TOP
 - 1 #5 X 17'-9" @ 10" SW TOP
 - 1 #5 X 18'-6" @ 10" SW TOP
 - 1 #5 X 14'-0" @ 10" SW TOP
 - 1 #5 X 14'-9" @ 10" SW TOP
 - 1 #5 X 15'-9" @ 10" SW TOP
 - 1 #5 X 16'-6" @ 10" SW TOP (b)
- LIST - N**
- 1 #5 X 12'-8" @ 10" SW TOP (a)
 - 1 #5 X 11'-10" @ 10" SW TOP
 - 1 #5 X 11'-0" @ 10" SW TOP
 - 1 #5 X 10'-2" @ 10" SW TOP
 - 1 #5 X 9'-4" @ 10" SW TOP
 - 1 #5 X 8'-6" @ 10" SW TOP
 - 1 #5 X 7'-5" @ 10" SW TOP
 - 1 #5 X 8'-3" @ 10" SW TOP
 - 1 #5 X 9'-1" @ 10" SW TOP
 - 1 #5 X 9'-11" @ 10" SW TOP
 - 1 #5 X 10'-9" @ 10" SW TOP
 - 1 #5 X 11'-7" @ 10" SW TOP
 - 1 #5 X 12'-5" @ 10" SW TOP
 - 1 #5 X 13'-3" @ 10" SW TOP
 - 1 #5 X 14'-1" @ 10" SW TOP
 - 1 #5 X 14'-11" @ 10" SW TOP (b)
- LIST - P**
- FOR FIELD ADJUSTMENT
- 2x9 #5 X 5'-3" @ 10" STEP LW TOP ES (a)
 - 2x1 #5 SA07 @ 10" STEP LW TOP ES
 - 2x1 #5 SA08 @ 10" STEP LW TOP ES
 - 2x2 #5 SA09 @ 10" STEP LW TOP ES
 - 2x1 #5 SA10 @ 10" STEP LW TOP ES
 - 2x1 #5 SA11 @ 10" STEP LW TOP ES
 - 2x1 #5 SA12 @ 10" STEP LW TOP ES
 - 2x2 #5 SA13 @ 10" STEP LW TOP ES
 - 2x1 #5 SA14 @ 10" STEP LW TOP ES
 - 2x1 #5 SA15 @ 10" STEP LW TOP ES
 - 2x1 #5 SA16 @ 10" STEP LW TOP ES
 - 2x1 #5 SA17 @ 10" STEP LW TOP ES (b)

(CONTINUATION)
 (BOTTOM EACH WAY REINFORCEMENT DETAILS)
FOUNDATION REINFORCEMENT DETAILS : (BLDG-A)
 SCALE: 1/12"=1'-0"
 REF: S101A, S101B, A111A & A111B

FOR CONTINUATION REFER BLDG-B



- LIST - H**
- 1 #5 X 11'-6" @ 10" LW TOP (a)
 - 1 #5 X 10'-0" @ 10" LW TOP
 - 1 #5 X 10'-0" @ 10" LW TOP
 - 1 #5 X 9'-0" @ 10" LW TOP
 - 1 #5 X 8'-3" @ 10" LW TOP
 - 1 #5 X 7'-3" @ 10" LW TOP
 - 1 #5 X 6'-6" @ 10" LW TOP
 - 1 #5 X 6'-3" @ 10" LW TOP
 - 1 #5 X 7'-0" @ 10" LW TOP
 - 1 #5 X 7'-9" @ 10" LW TOP
 - 1 #5 X 8'-9" @ 10" LW TOP
 - 1 #5 X 9'-6" @ 10" LW TOP
 - 1 #5 X 10'-3" @ 10" LW TOP
 - 1 #5 X 11'-0" @ 10" LW TOP
 - 1 #5 X 11'-9" @ 10" LW TOP
 - 1 #5 X 12'-9" @ 10" LW TOP
 - 1 #5 X 13'-6" @ 10" LW TOP
 - 1 #5 X 14'-3" @ 10" LW TOP
 - 1 #5 X 15'-0" @ 10" LW TOP (b)
- LIST - J**
- 1 #5 X 13'-0" @ 10" LW TOP (a)
 - 1 #5 X 12'-3" @ 10" LW TOP
 - 1 #5 X 11'-3" @ 10" LW TOP
 - 1 #5 X 10'-6" @ 10" LW TOP
 - 1 #5 X 9'-9" @ 10" LW TOP
 - 1 #5 X 8'-9" @ 10" LW TOP
 - 1 #5 X 8'-0" @ 10" LW TOP
 - 1 #5 X 7'-3" @ 10" LW TOP
 - 1 #5 X 7'-9" @ 10" LW TOP
 - 1 #5 X 8'-4" @ 10" LW TOP
 - 1 #5 X 9'-3" @ 10" LW TOP
 - 1 #5 X 10'-3" @ 10" LW TOP
 - 1 #5 X 11'-9" @ 10" LW TOP
 - 1 #5 X 12'-9" @ 10" LW TOP
 - 1 #5 X 13'-6" @ 10" LW TOP
 - 1 #5 X 14'-3" @ 10" LW TOP (b)
- LIST - K**
- 1 #5 SA88 @ 10" SW TOP (a)
 - 1 #5 SA87 @ 10" SW TOP
 - 1 #5 SA107 @ 10" SW TOP
 - 1 #5 SA108 @ 10" SW TOP
 - 1 #5 X 4'-10" @ 10" SW TOP
 - 1 #5 X 5'-8" @ 10" SW TOP
 - 1 #5 X 6'-6" @ 10" SW TOP
 - 1 #5 X 7'-1" @ 10" SW TOP (b)
 - 4 #5 SA03 @ 10" SW TOP
- LIST - L**
- 1 #5 SA88 @ 10" SW TOP (a)
 - 1 #5 SA87 @ 10" SW TOP
 - 1 #5 SA107 @ 10" SW TOP
 - 1 #5 SA108 @ 10" SW TOP
 - 1 #5 X 4'-10" @ 10" SW TOP
 - 1 #5 X 5'-8" @ 10" SW TOP
 - 1 #5 X 6'-6" @ 10" SW TOP
 - 1 #5 X 7'-1" @ 10" SW TOP (b)
 - 4 #5 SA03 @ 10" SW TOP
- LIST - M**
- 1 #5 X 17'-3" @ 10" SW TOP (a)
 - 1 #5 X 15'-9" @ 10" SW TOP
 - 1 #5 X 16'-6" @ 10" SW TOP
 - 1 #5 X 14'-6" @ 10" SW TOP
 - 1 #5 X 15'-3" @ 10" SW TOP
 - 1 #5 X 16'-0" @ 10" SW TOP
 - 1 #5 X 17'-0" @ 10" SW TOP
 - 1 #5 X 17'-9" @ 10" SW TOP
 - 1 #5 X 18'-6" @ 10" SW TOP
 - 1 #5 X 14'-0" @ 10" SW TOP
 - 1 #5 X 14'-9" @ 10" SW TOP
 - 1 #5 X 15'-9" @ 10" SW TOP
 - 1 #5 X 16'-6" @ 10" SW TOP (b)
- LIST - N**
- 1 #5 X 12'-8" @ 10" SW TOP (a)
 - 1 #5 X 11'-10" @ 10" SW TOP
 - 1 #5 X 11'-0" @ 10" SW TOP
 - 1 #5 X 10'-2" @ 10" SW TOP
 - 1 #5 X 9'-4" @ 10" SW TOP
 - 1 #5 X 8'-6" @ 10" SW TOP
 - 1 #5 X 7'-5" @ 10" SW TOP
 - 1 #5 X 8'-3" @ 10" SW TOP
 - 1 #5 X 9'-1" @ 10" SW TOP
 - 1 #5 X 9'-11" @ 10" SW TOP
 - 1 #5 X 10'-9" @ 10" SW TOP
 - 1 #5 X 11'-7" @ 10" SW TOP
 - 1 #5 X 12'-5" @ 10" SW TOP
 - 1 #5 X 13'-3" @ 10" SW TOP
 - 1 #5 X 14'-1" @ 10" SW TOP
 - 1 #5 X 14'-11" @ 10" SW TOP (b)
- LIST - P**
- FOR FIELD ADJUSTMENT
- 2x9 #5 X 5'-3" @ 10" STEP LW TOP ES (a)
 - 2x1 #5 SA07 @ 10" STEP LW TOP ES
 - 2x1 #5 SA08 @ 10" STEP LW TOP ES
 - 2x2 #5 SA09 @ 10" STEP LW TOP ES
 - 2x1 #5 SA10 @ 10" STEP LW TOP ES
 - 2x1 #5 SA11 @ 10" STEP LW TOP ES
 - 2x1 #5 SA12 @ 10" STEP LW TOP ES
 - 2x2 #5 SA13 @ 10" STEP LW TOP ES
 - 2x1 #5 SA14 @ 10" STEP LW TOP ES
 - 2x1 #5 SA15 @ 10" STEP LW TOP ES
 - 2x1 #5 SA16 @ 10" STEP LW TOP ES
 - 2x1 #5 SA17 @ 10" STEP LW TOP ES (b)

(CONTINUATION)
 (TOP EACH WAY REINFORCEMENT DETAILS)
FOUNDATION REINFORCEMENT DETAILS : (BLDG-A)
 SCALE: 1/12"=1'-0"
 REF: S101A, S101B, A111A & A111B

FOR CONTINUATION REFER BLDG-B

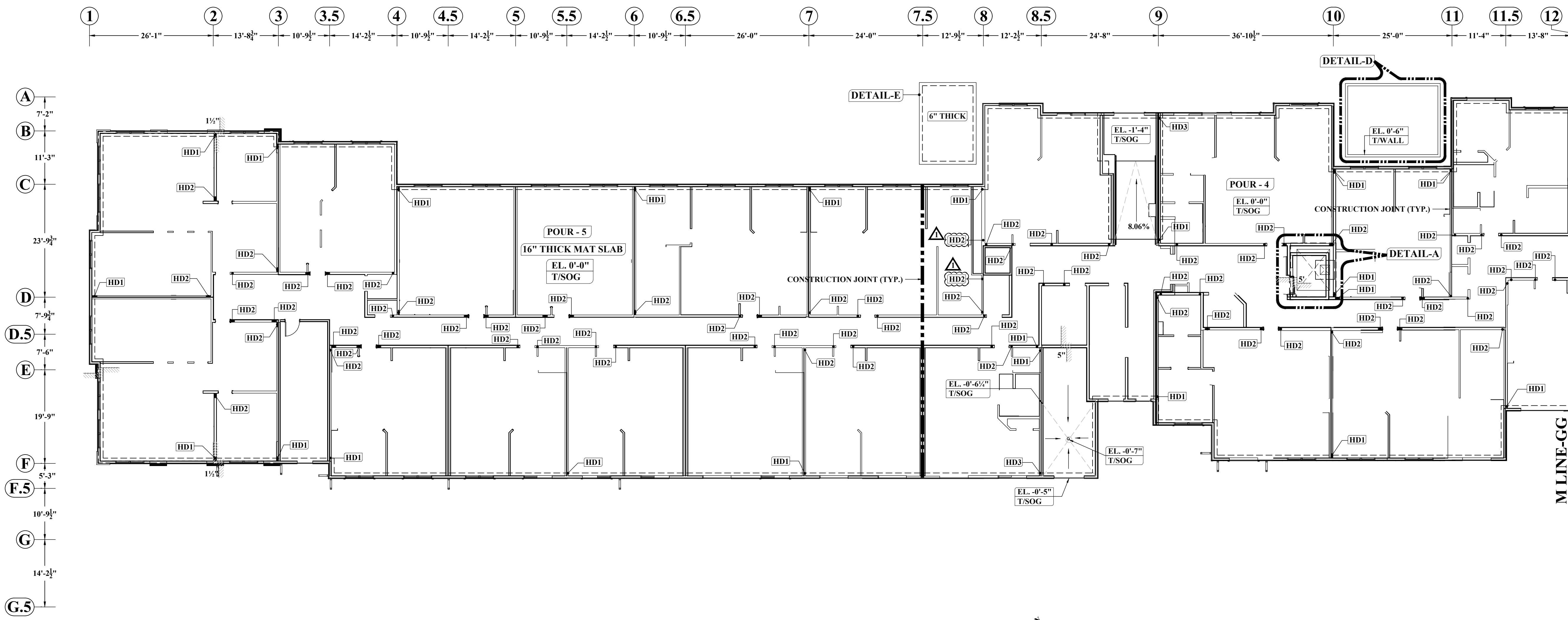
LAP SCHEDULE (CLASS-B)
 REF: 10/5500

| #3 | 4000 PSI | |
|----|----------|-------|
| | TOP | OTHER |
| #3 | 24" | 18" |
| #4 | 32" | 25" |
| #5 | 40" | 31" |
| #6 | 48" | 37" |
| #7 | 70" | 54" |
| #8 | 80" | 62" |
| #9 | 90" | 69" |

ABBREVIATIONS

| | |
|----------------|--------|
| TOP | - |
| BOTTOM | BOT |
| TOP&BOTTOM | T&B |
| CONTINUOUS | CONT |
| FACE BAR | - |
| CORNER BAR | COR |
| VERTICAL | VERT |
| HORIZONTAL | HOR |
| STIRRUPS | STIRR |
| EACH WAY | EW |
| EACH FACE | EF |
| INNER FACE | IF |
| OUTER FACE | OF |
| EACH SIDE | ES |
| MASONRY | M |
| DOWEL | DWL |
| DOWEL/VERTICAL | D/V |
| TRANSVERSE | TRANS |
| LONG WAY BAR | LW |
| SHORT WAY BAR | SW |
| MATCH LINE | M LINE |

NOTE: REINFORCING STEEL PLACING DRAWINGS TO BE USED ONLY IN CONJUNCTION WITH CONTRACT DRAWINGS AND SPECIFICATIONS. ELEVATIONS & DIMENSIONS SHOWN ON THIS DRAWING ARE FOR VERIFICATION BY THE EOR OR FOR DETAILING PURPOSES ONLY AND SHOULD NOT BE USED FOR CONSTRUCTION UNLESS VERIFIED BY THE ARCHITECT, ENGINEER OF RECORD, OR CONTRACTOR.

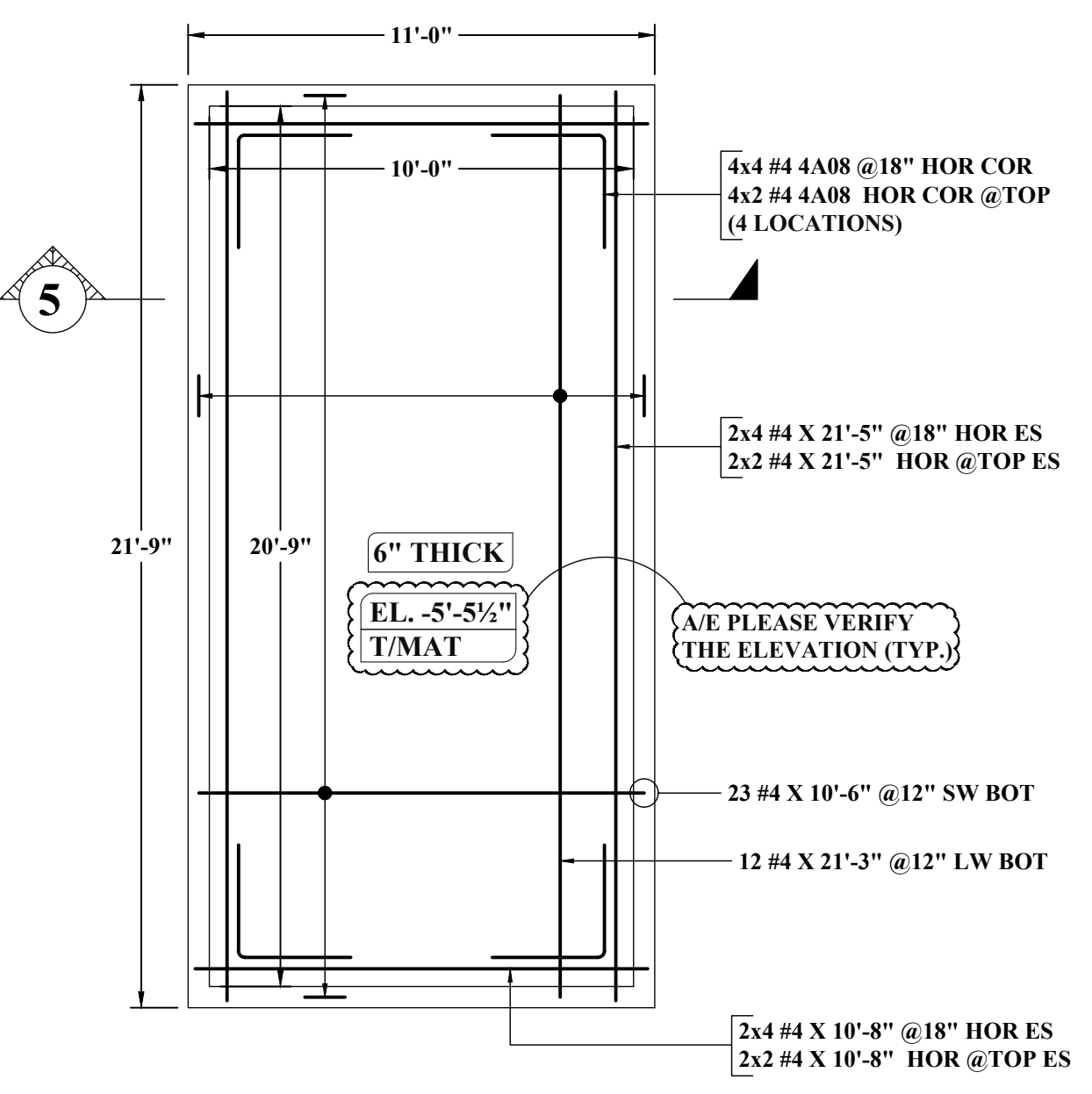


(HOLDOWN REINFORCEMENT DETAILS)
FOUNDATION REINFORCEMENT DETAILS : (BLDG-A)
 SCALE : 1/12"=1'-0"
 REF : S101A, S101B, A111A & A111B

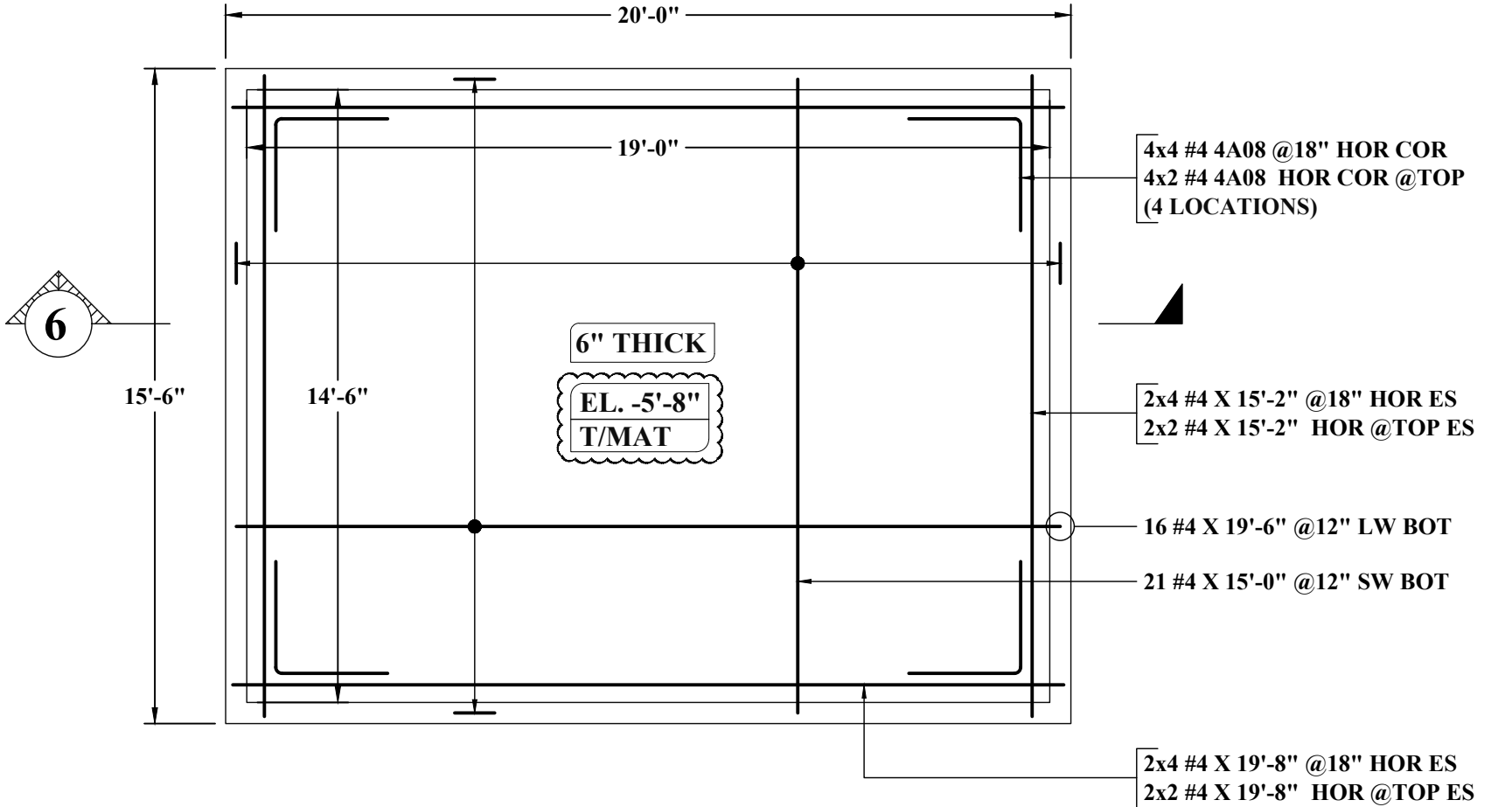
| MESH QUANTITY SCHEDULE | | | | |
|------------------------|----------------|-----------------------|-----------------------|--------------------------------|
| MARK | SHEET SIZE | TYPE | QUANTITY WITH 15% LAP | REMARKS |
| S1 | 7'-0" X 20'-0" | 6 X 6 - W2.9XW2.9 WWF | 2 EACH | TOTAL AREA OF SLAB = 207 SQ.FT |

| ABBREVIATIONS | |
|----------------|--------|
| TOP | - |
| BOTTOM | BOT |
| TOP&BOTTOM | T&B |
| CONTINUOUS | CONT |
| FACE BAR | - |
| CORNER BAR | COR |
| VERTICAL | VERT |
| HORIZONTAL | HOR |
| STIRRUPS | STIRR |
| EACH WAY | EW |
| EACH FACE | EF |
| INNER FACE | IF |
| OUTER FACE | OF |
| EACH SIDE | ES |
| MASONRY | M |
| DOWEL | DWL |
| DOWEL/VERTICAL | D/V |
| TRANSVERSE | TRANS |
| LONG WAY BAR | LW |
| SHORT WAY BAR | SW |
| MATCH LINE | M LINE |

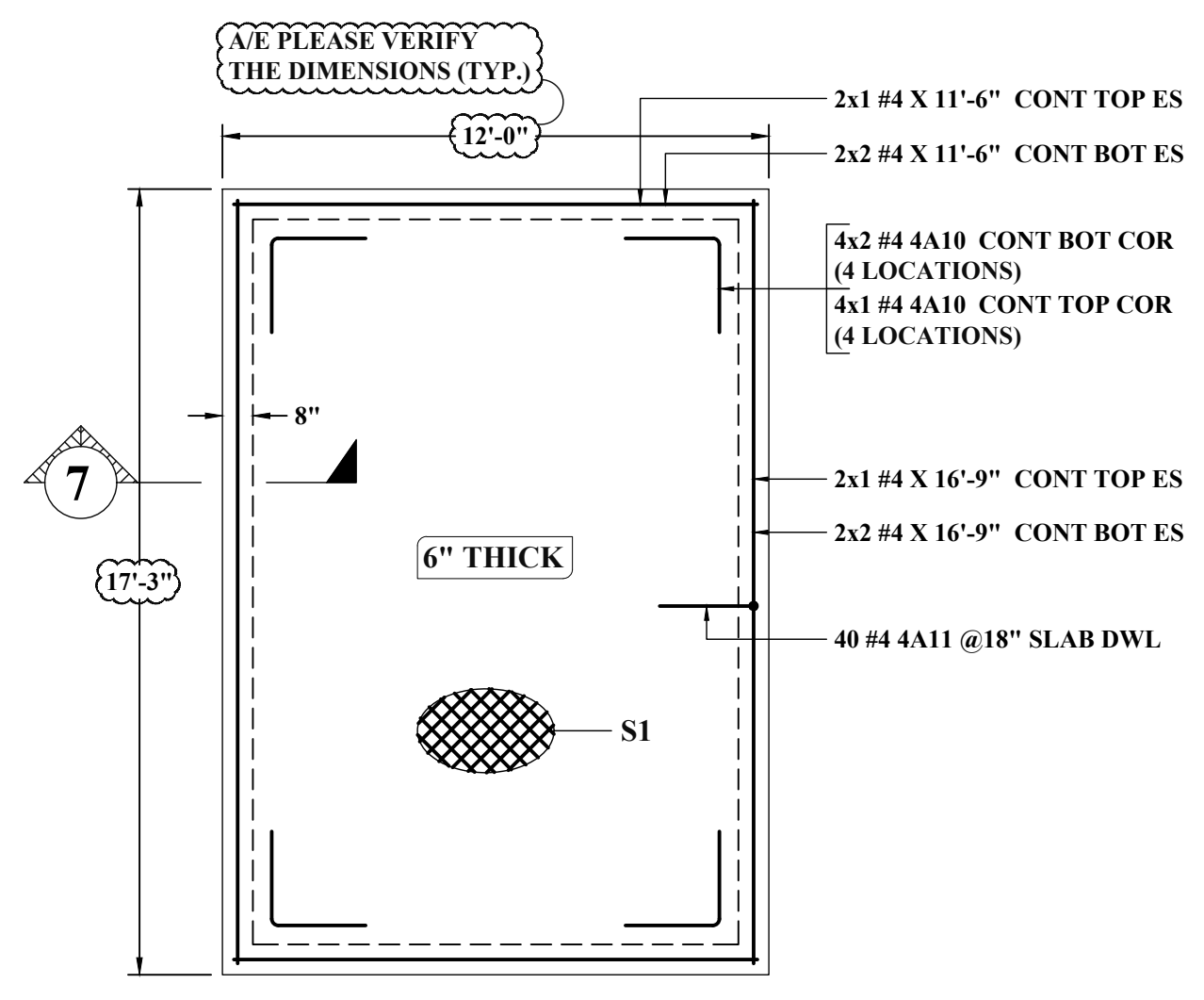
| LAP SCHEDULE (CLASS-B) | | |
|------------------------|----------|-------|
| SIZE | 4000 PSI | |
| | TOP | OTHER |
| #3 | 24" | 18" |
| #4 | 32" | 25" |
| #5 | 40" | 31" |
| #6 | 48" | 37" |
| #7 | 70" | 54" |
| #8 | 80" | 62" |
| #9 | 90" | 69" |



(STORMWATER PLANTER)
DETAIL-C
 SCALE : 1/4"=1'-0"
 REF : C101 & C203



(STORMWATER PLANTER)
DETAIL-D
 SCALE : 1/4"=1'-0"
 REF : C100 & C200

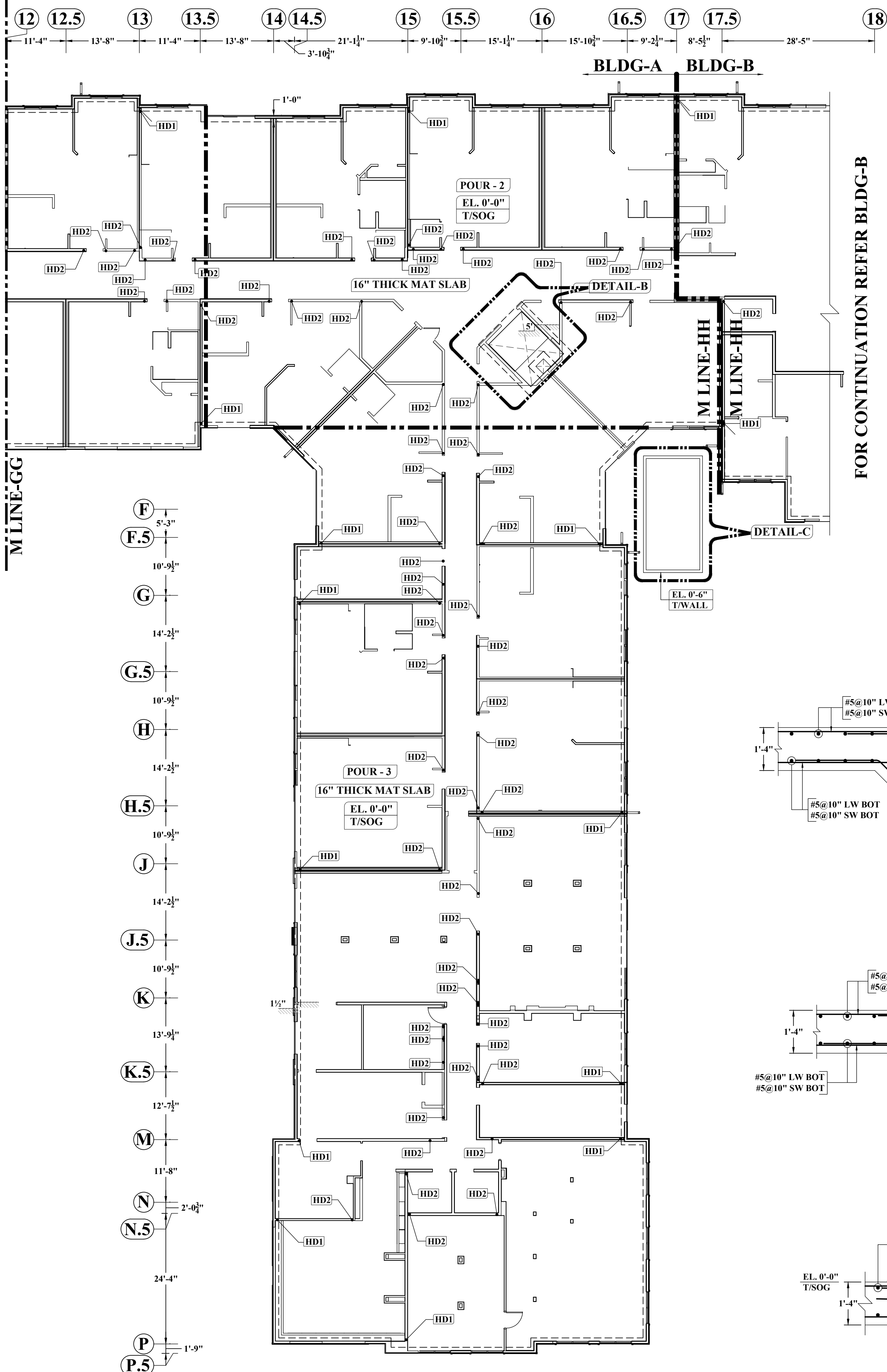


(CONCRETE PAD)
DETAIL-E
 SCALE : 1/4"=1'-0"
 REF : 9/S500

- NOTES:-**
- TYPICAL CLEARANCES
 A). TOP - 1 1/2"
 B). BOTTOM - 3"
 C). SIDES - 3"
 - A/E PLEASE VERIFY THE ALL CLOUDED ITEMS
 - PROVIDE FIELD CUT AS REQUIRED LOCATIONS
 - BAR TO BE PLACED AT EQUAL SPACING U.O.N.
 - TILT HOOK TO ACCOMMODATE THE COVER, IF NEED

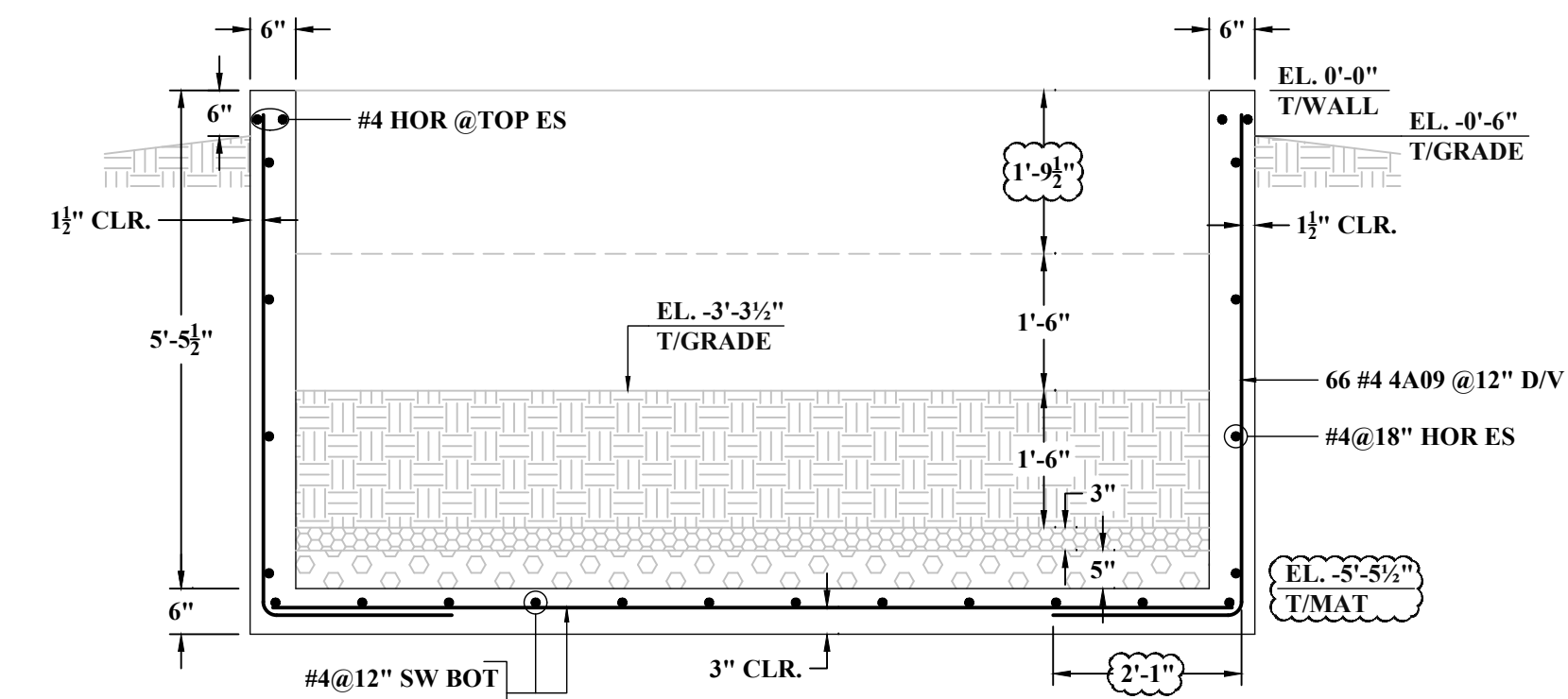
ALL BARS IN THIS DRAWING ASTM A615 GRADE 60 BLACK UNCOATED

NOTE: REINFORCING STEEL PLACING DRAWINGS TO BE USED ONLY IN CONJUNCTION WITH CONTRACT DRAWINGS AND SPECIFICATIONS. ELEVATIONS & DIMENSIONS SHOWN ON THIS DRAWING ARE FOR VERIFICATION BY THE EOR OR FOR DETAILING PURPOSES ONLY AND SHOULD NOT BE USED FOR CONSTRUCTION UNLESS VERIFIED BY THE ARCHITECT, ENGINEER OF RECORD, OR CONTRACTOR.

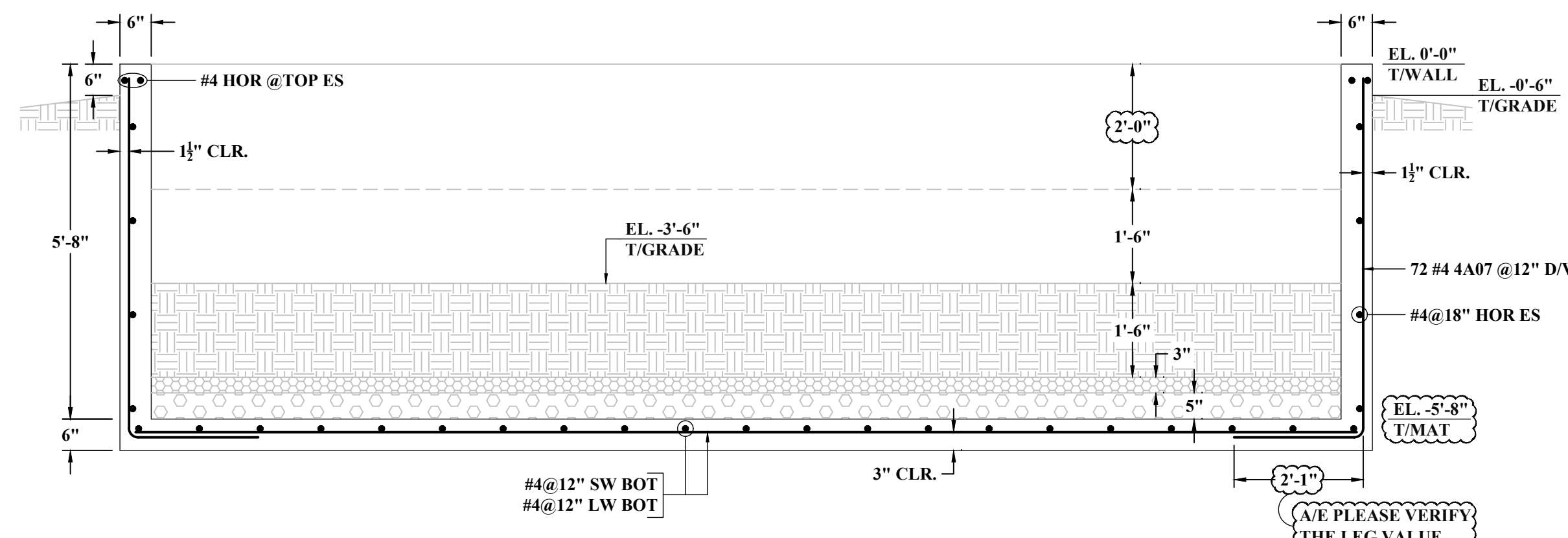


(CONTINUATION)
 (HOLDOWN REINFORCEMENT DETAILS)
FOUNDATION REINFORCEMENT DETAILS : (BLDG-A)
 SCALE: 1/12"=1'-0"
 REF: S101A, S101B, A111A & A111B

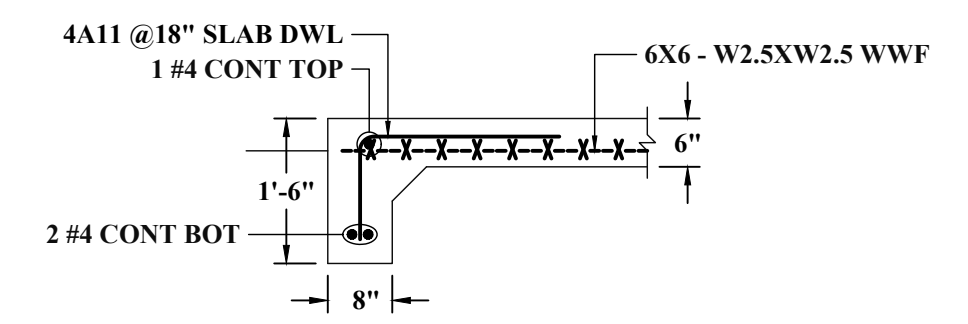
NOTE: REINFORCING STEEL PLACING DRAWINGS TO BE USED ONLY IN CONJUNCTION WITH CONTRACT DRAWINGS AND SPECIFICATIONS. ELEVATIONS & DIMENSIONS SHOWN ON THIS DRAWING ARE FOR VERIFICATION BY THE EOR OR FOR DETAILING PURPOSES ONLY AND SHOULD NOT BE USED FOR CONSTRUCTION UNLESS VERIFIED BY THE ARCHITECT, ENGINEER OF RECORD, OR CONTRACTOR.



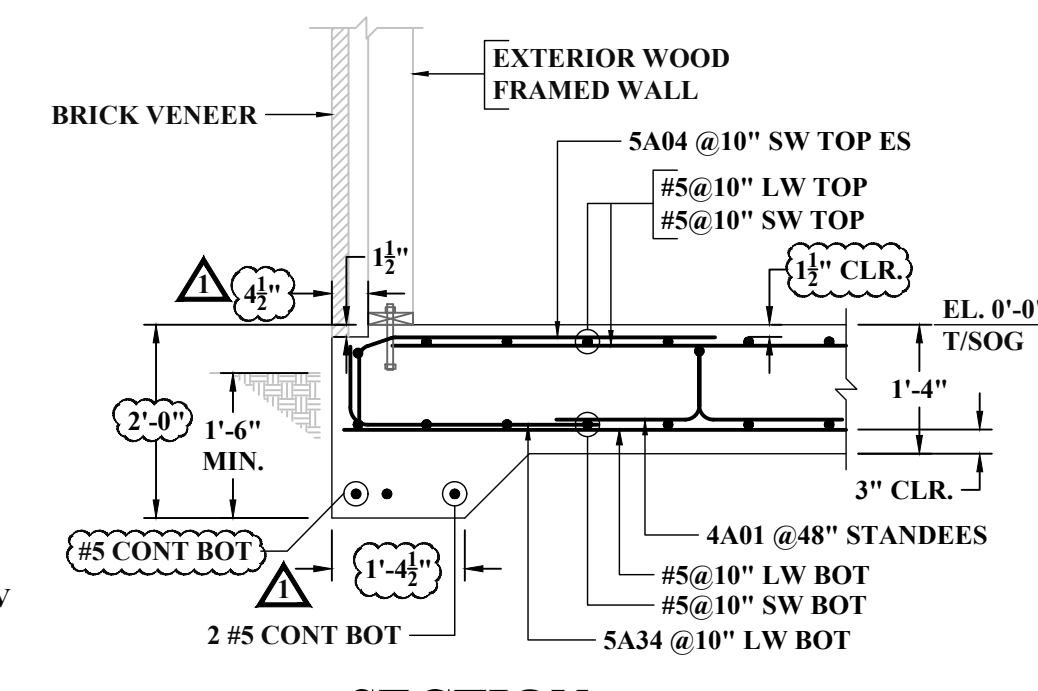
SECTION 5
 SCALE: 1/2"=1'-0"
 REF: 4/S500 & 12/C401



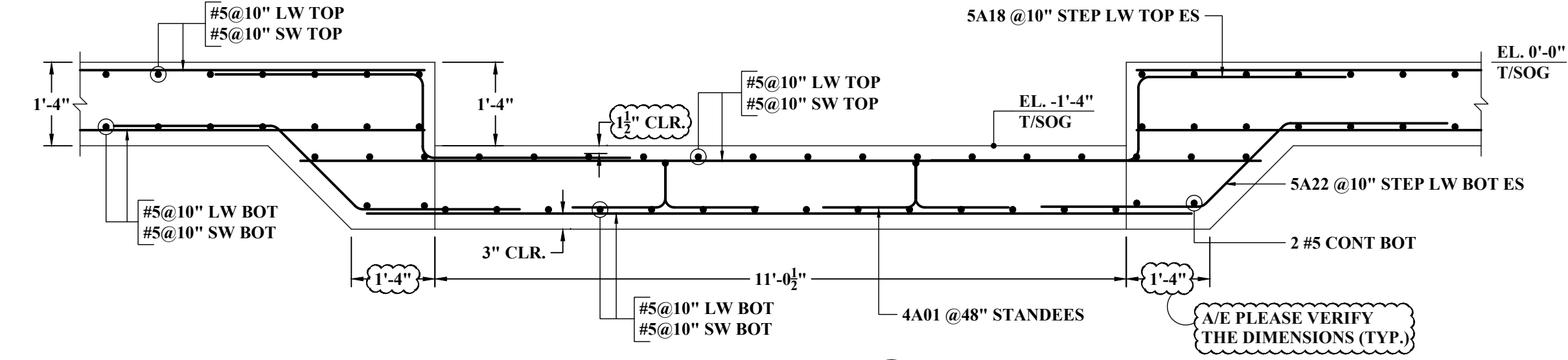
SECTION 6
 SCALE: 1/2"=1'-0"
 REF: 4/S500 & 12/C401



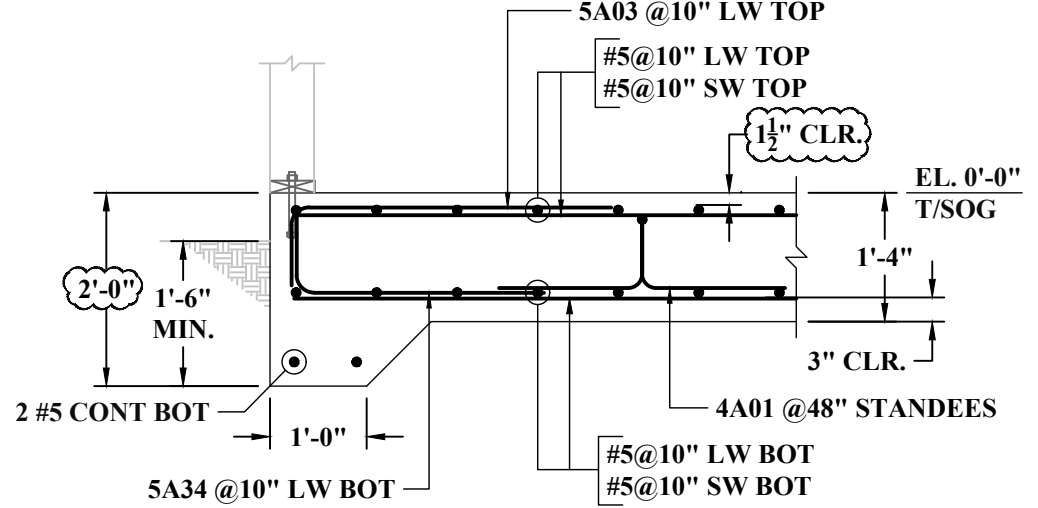
SECTION 7
 SCALE: 1/2"=1'-0"
 REF: 9/S500



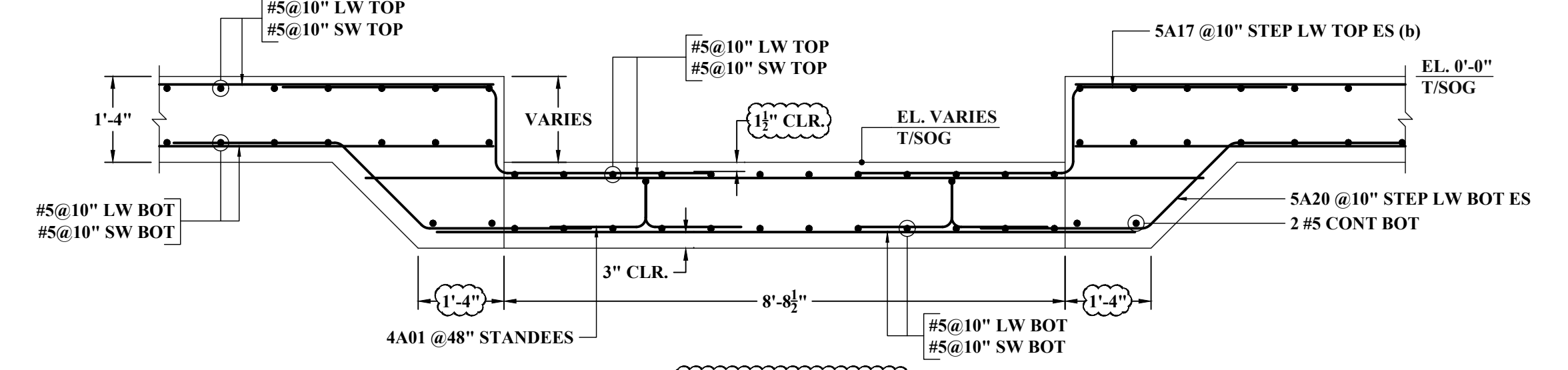
SECTION 8
 SCALE: 1/2"=1'-0"
 REF: 19/S500



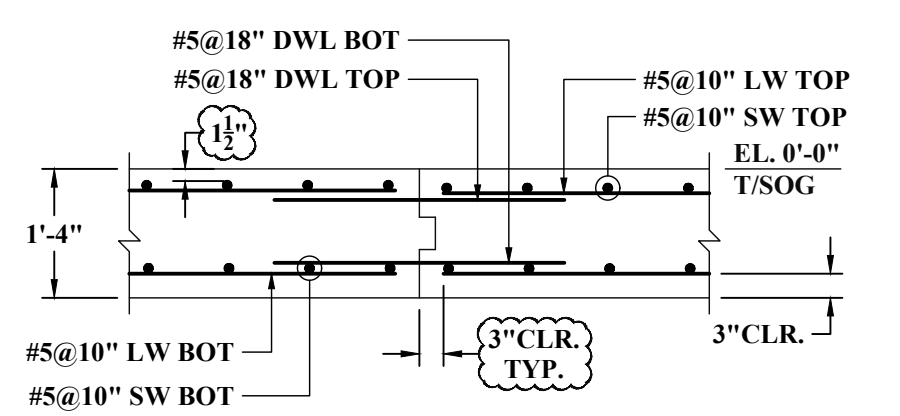
SECTION 11
 SCALE: 1/2"=1'-0"
 REF: -
 A/E PLEASE VERIFY THE REINF. & SECTION DETAILS FOLLOWED (TYP.)



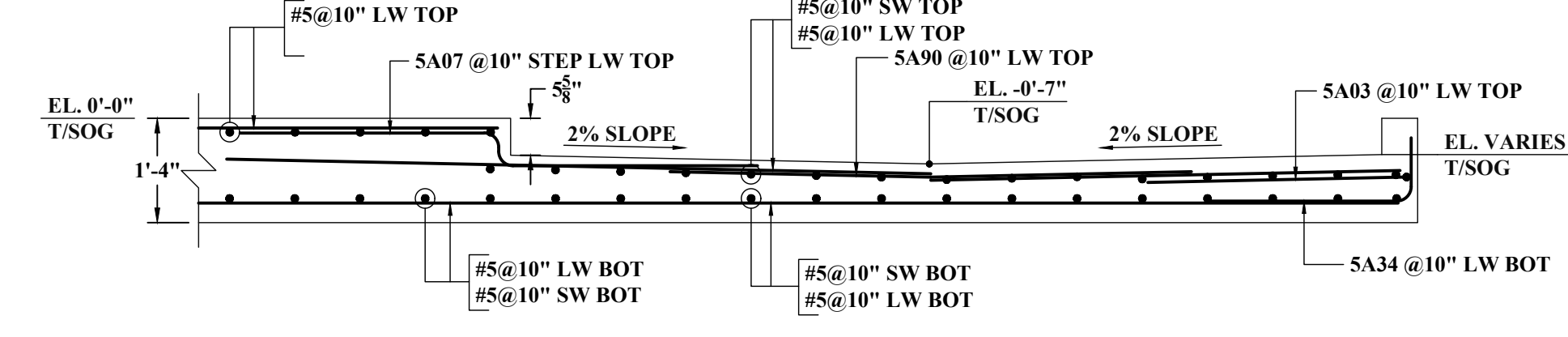
SECTION 9
 SCALE: 1/2"=1'-0"
 REF: 20/S500



SECTION 12
 SCALE: 1/2"=1'-0"
 REF: -
 A/E PLEASE VERIFY THE DIMENSIONS (TYP.)



(CONSTRUCTION JOINT)
SECTION 10
 SCALE: 1/2"=1'-0"
 REF: 12/S500



SECTION 13
 SCALE: 1/2"=1'-0"
 REF: -
 A/E PLEASE VERIFY THE DIMENSIONS (TYP.)

LAP SCHEDULE (CLASS-B)
 REF: 10/S500

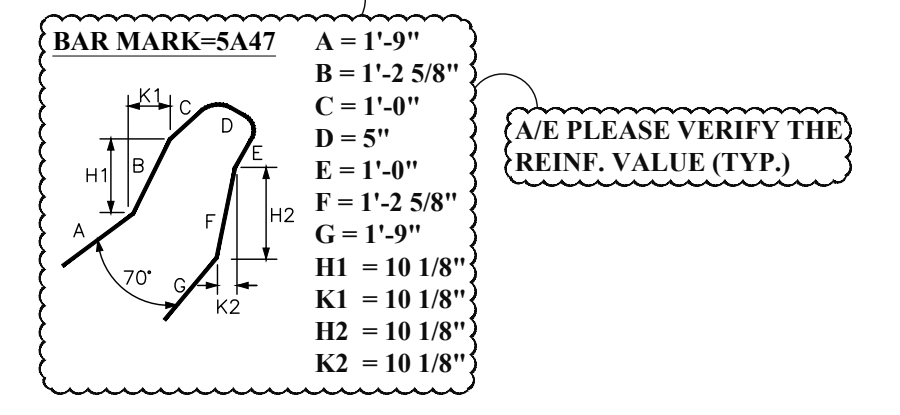
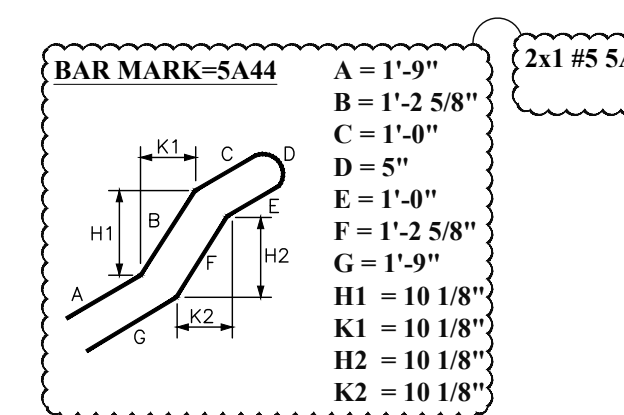
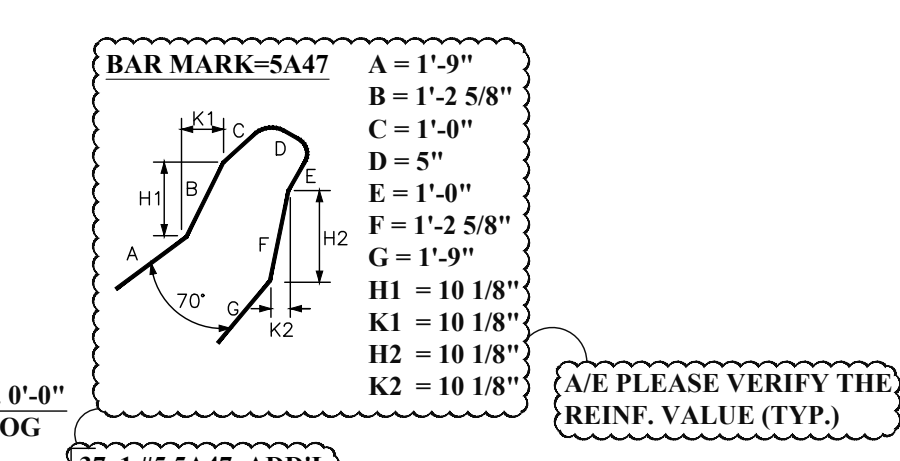
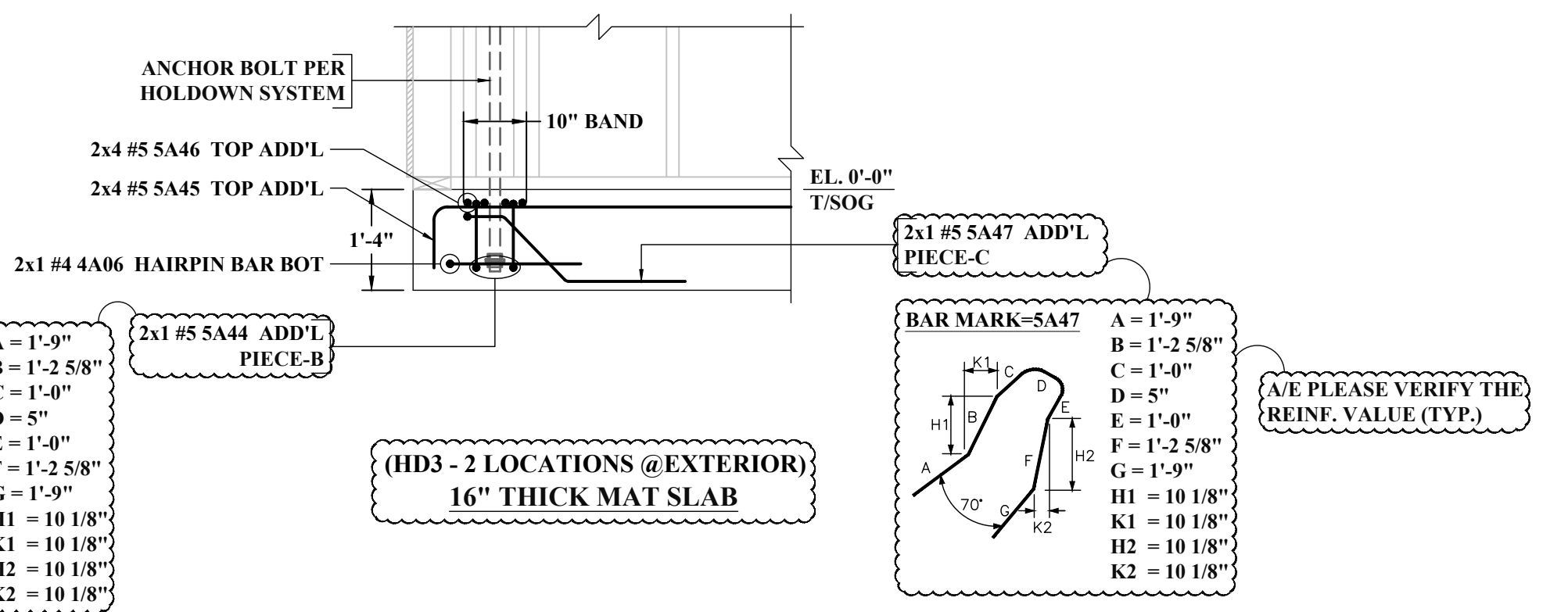
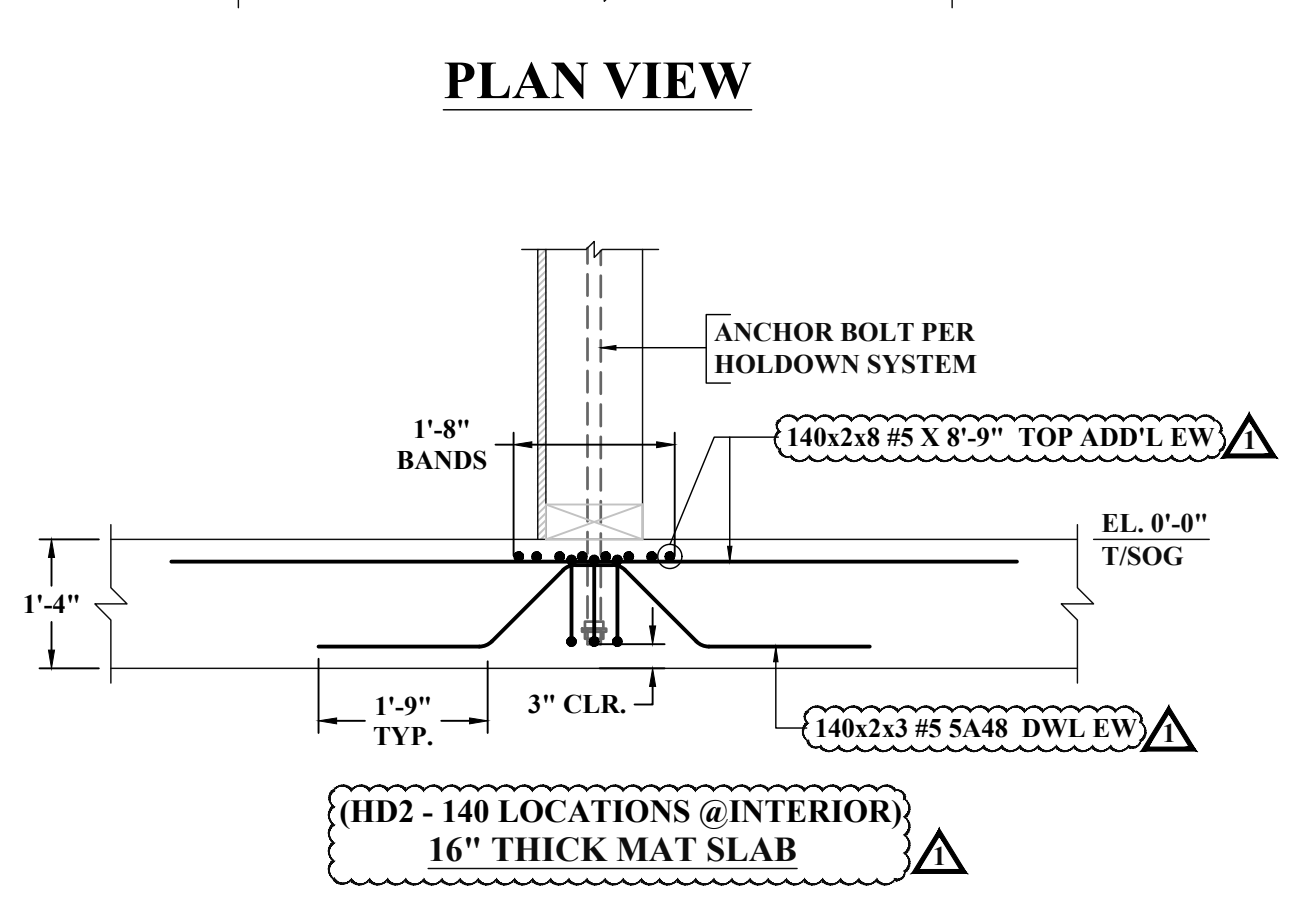
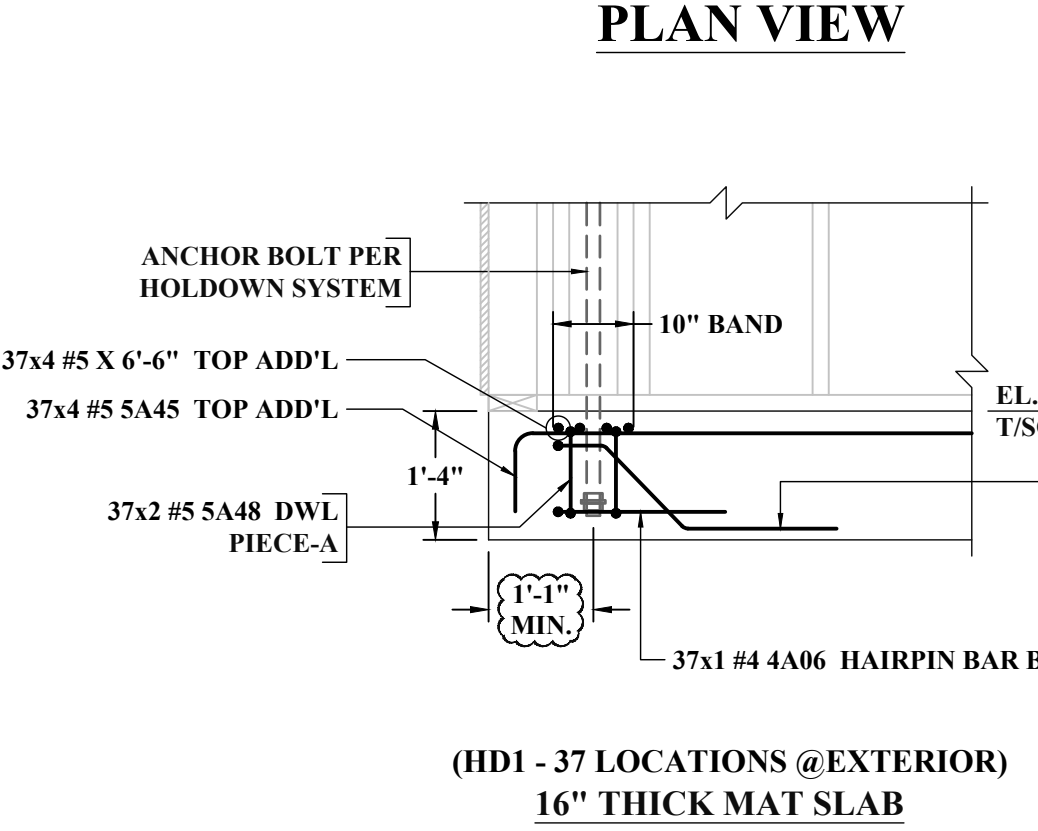
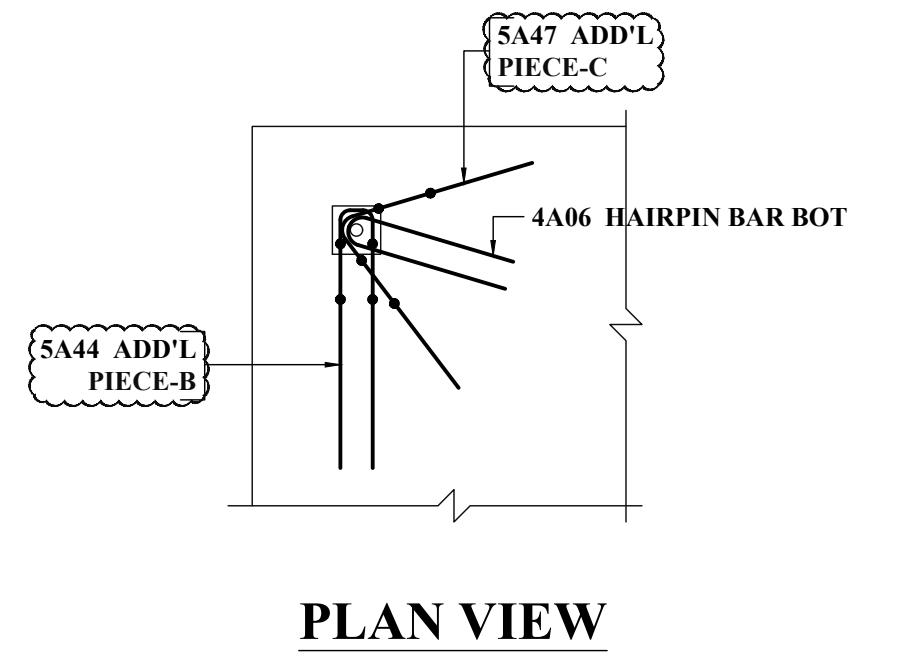
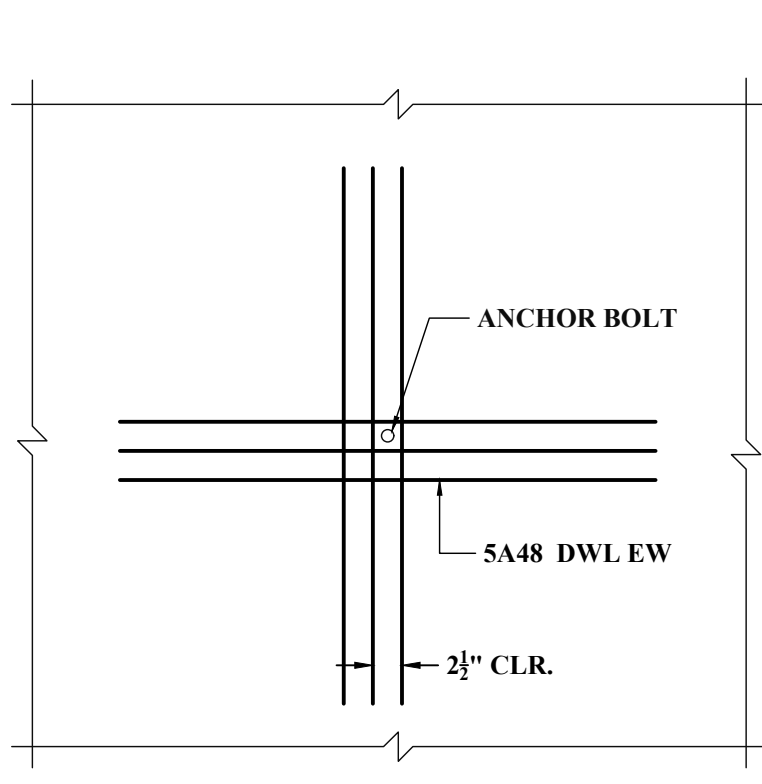
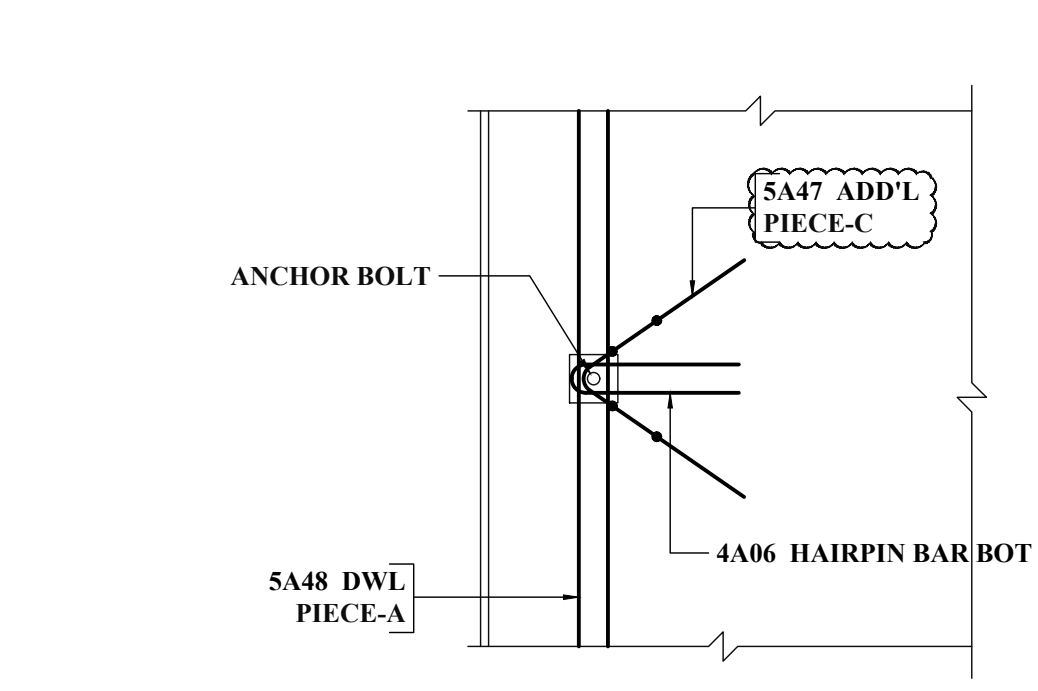
| SIZE | 4000 PSI | |
|------|----------|-------|
| | TOP | OTHER |
| #3 | 24" | 18" |
| #4 | 32" | 25" |
| #5 | 40" | 31" |
| #6 | 48" | 37" |
| #7 | 70" | 54" |
| #8 | 80" | 62" |
| #9 | 90" | 69" |

ABBREVIATIONS

| | |
|----------------|--------|
| TOP | - |
| BOTTOM | BOT |
| TOP & BOTTOM | T & B |
| CONTINUOUS | CONT |
| FACE BAR | - |
| CORNER BAR | COR |
| VERTICAL | VERT |
| HORIZONTAL | HOR |
| STIRRUPS | STIRR |
| EACH WAY | EW |
| EACH FACE | EF |
| INNER FACE | IF |
| OUTER FACE | OF |
| EACH SIDE | ES |
| MASONRY | M |
| DOWEL | DWL |
| DOWEL/VERTICAL | D/V |
| TRANSVERSE | TRANS |
| LONG WAY BAR | LW |
| SHORT WAY BAR | SW |
| MATCH LINE | M LINE |

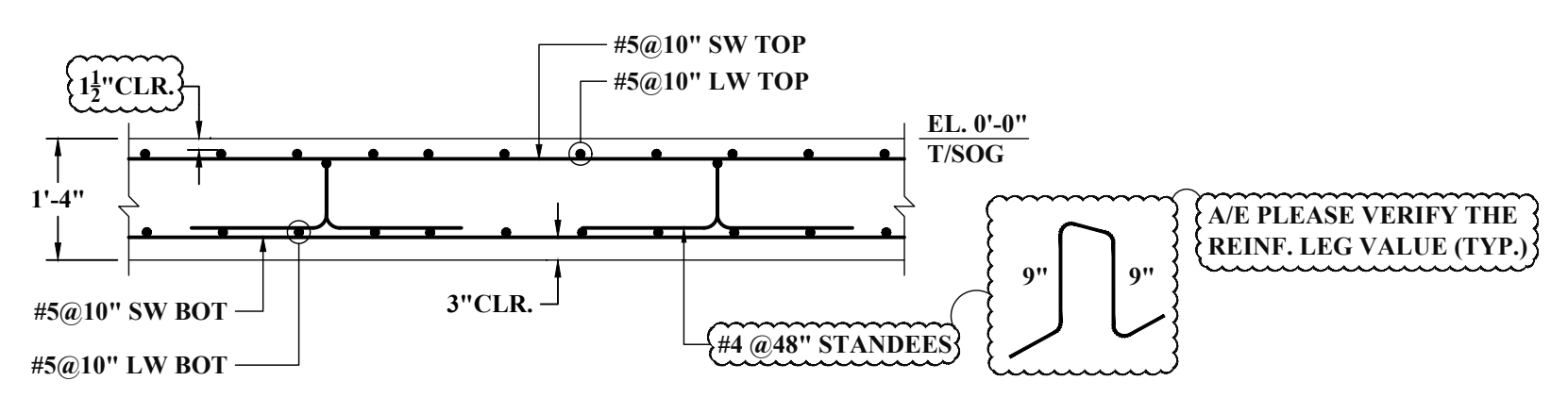
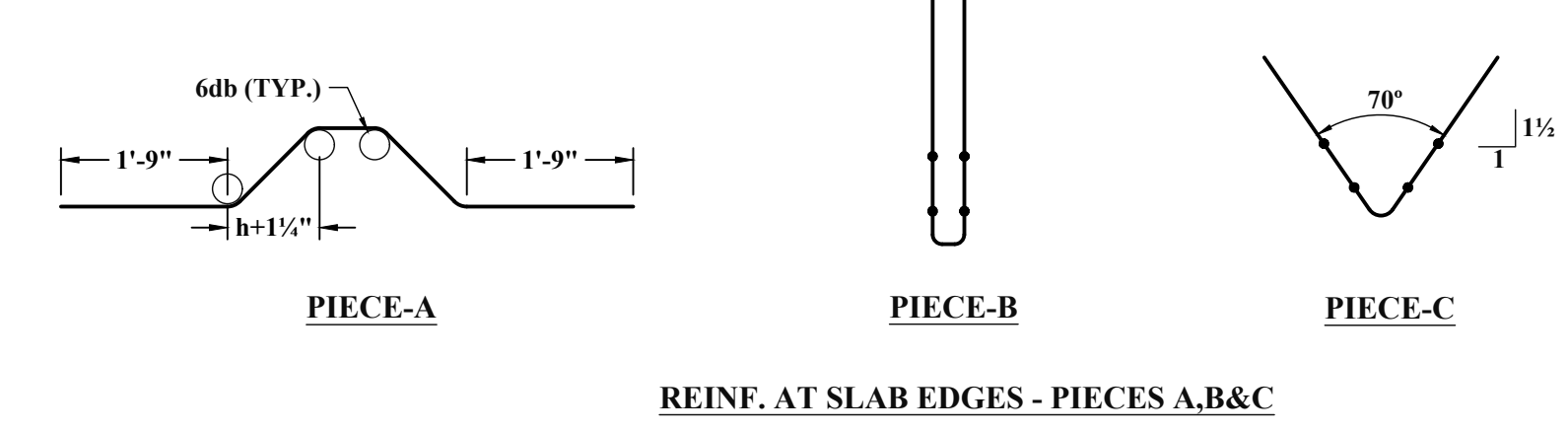
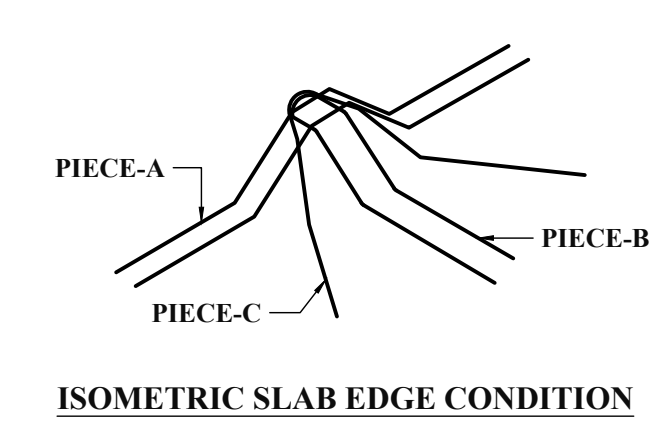
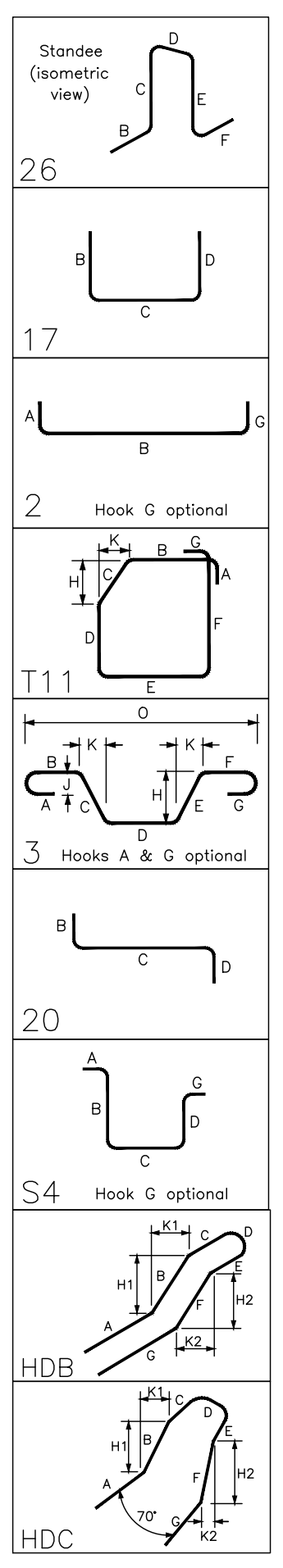
- NOTES:-**
- TYPICAL CLEARANCES
 A). TOP $1\frac{1}{2}"$
 B). BOTTOM $3"$
 C). SIDES $3"$
 - A/E PLEASE VERIFY THE ALL CLOUDED ITEMS
 - PROVIDE FIELD CUT AS REQUIRED LOCATIONS
 - BAR TO BE PLACED AT EQUAL SPACING U.O.N.
 - TILT HOOK TO ACCOMMODATE THE COVER, IF NEED

ALL BARS IN THIS DRAWING ASTM A615 GRADE 60 BLACK UNCOATED



Release Number: F-A-1 TO F-A-7

| Bar Mark | Qty | Size | Total Length | Type | X | Y | Z | W | V | U | T | S | R | Q | P |
|----------|------|------|--------------|------|-----------|------------|-----------|------------|-----------|------------|------------|-----------|-------|---|---|
| 4A01 | 2152 | #4 | 5'-2" | 26 | 1'-6" | 0'-9" | 0'-8" | 0'-9" | 1'-6" | 0'-9" | 1'-6" | | | | |
| 4A06 | 39 | #4 | 3'-10" | 17 | 1'-9" | 0'-4" | 1'-9" | 0'-9" | 1'-6" | 0'-9" | 1'-6" | | | | |
| 4A07 | 72 | #4 | 7'-10" | 17 | 2'-7" | 5'-9" | 2'-7" | 5'-9" | 2'-7" | 5'-9" | 2'-7" | | | | |
| 4A08 | 48 | #4 | 5'-4" | 17 | 2'-8" | 2'-8" | 2'-8" | 2'-8" | 2'-8" | 2'-8" | 2'-8" | | | | |
| 4A09 | 66 | #4 | 7'-7" | 17 | 2'-7" | 5'-6" | 2'-7" | 5'-6" | 2'-7" | 5'-6" | 2'-7" | | | | |
| 4A10 | 12 | #4 | 4'-7" | 17 | 2'-7" | 2'-7" | 2'-7" | 2'-7" | 2'-7" | 2'-7" | 2'-7" | | | | |
| 4A11 | 40 | #4 | 3'-2" | 17 | 1'-7" | 2'-7" | 1'-7" | 2'-7" | 1'-7" | 2'-7" | 1'-7" | | | | |
| 5A03 | 1762 | #5 | 4'-2" | 2 | 0'-10" | 3'-4" | 3'-4" | 3'-4" | 3'-4" | 3'-4" | 3'-4" | | | | |
| 5A04 | 61 | #5 | 4'-8 1/2" | 111 | 3'-4" | 0'-4 1/2" | 0'-10" | 0'-4 1/2" | 0'-10" | 0'-4 1/2" | 0'-10" | | | | |
| 5A05 | 21 | #5 | 3'-8 1/2" | 3 | 2'-7" | 0'-6 1/2" | 2'-7" | 0'-6 1/2" | 2'-7" | 0'-6 1/2" | 2'-7" | | | | |
| 5A06 | 24 | #5 | 6'-8 1/2" | 3 | 3'-4" | 3'-4" | 3'-4" | 3'-4" | 3'-4" | 3'-4" | 3'-4" | | | | |
| 5A07 | 60 | #5 | 7'-1 1/2" | 20 | 3'-4" | 0'-5 1/2" | 3'-4" | 0'-5 1/2" | 3'-4" | 0'-5 1/2" | 3'-4" | | | | |
| 5A08 | 21 | #5 | 7'-2 1/2" | 20 | 3'-4" | 0'-6 1/2" | 3'-4" | 0'-6 1/2" | 3'-4" | 0'-6 1/2" | 3'-4" | | | | |
| 5A09 | 4 | #5 | 7'-3 1/2" | 20 | 3'-4" | 0'-7 1/2" | 3'-4" | 0'-7 1/2" | 3'-4" | 0'-7 1/2" | 3'-4" | | | | |
| 5A10 | 21 | #5 | 7'-4 1/2" | 20 | 3'-4" | 0'-8 1/2" | 3'-4" | 0'-8 1/2" | 3'-4" | 0'-8 1/2" | 3'-4" | | | | |
| 5A11 | 21 | #5 | 7'-5 1/2" | 20 | 3'-4" | 0'-9 1/2" | 3'-4" | 0'-9 1/2" | 3'-4" | 0'-9 1/2" | 3'-4" | | | | |
| 5A12 | 21 | #5 | 7'-6 1/2" | 20 | 3'-4" | 0'-10 1/2" | 3'-4" | 0'-10 1/2" | 3'-4" | 0'-10 1/2" | 3'-4" | | | | |
| 5A13 | 4 | #5 | 7'-7 1/2" | 20 | 3'-4" | 0'-11 1/2" | 3'-4" | 0'-11 1/2" | 3'-4" | 0'-11 1/2" | 3'-4" | | | | |
| 5A14 | 21 | #5 | 7'-8 1/2" | 20 | 3'-4" | 1'-0 1/2" | 3'-4" | 1'-0 1/2" | 3'-4" | 1'-0 1/2" | 3'-4" | | | | |
| 5A15 | 21 | #5 | 7'-9 1/2" | 20 | 3'-4" | 1'-1 1/2" | 3'-4" | 1'-1 1/2" | 3'-4" | 1'-1 1/2" | 3'-4" | | | | |
| 5A16 | 21 | #5 | 7'-10 1/2" | 20 | 3'-4" | 1'-2 1/2" | 3'-4" | 1'-2 1/2" | 3'-4" | 1'-2 1/2" | 3'-4" | | | | |
| 5A17 | 21 | #5 | 7'-11 1/2" | 20 | 3'-4" | 1'-3 1/2" | 3'-4" | 1'-3 1/2" | 3'-4" | 1'-3 1/2" | 3'-4" | | | | |
| 5A18 | 20 | #5 | 8'-0 1/2" | 20 | 3'-4" | 1'-4 1/2" | 3'-4" | 1'-4 1/2" | 3'-4" | 1'-4 1/2" | 3'-4" | | | | |
| 5A19 | 34 | #5 | 5'-7" | 17 | 2'-7" | 2'-7" | 2'-7" | 2'-7" | 2'-7" | 2'-7" | 2'-7" | | | | |
| 5A20 | 21 | #5 | 5'-8 1/2" | 3 | 2'-7" | 0'-7 1/2" | 2'-7" | 0'-7 1/2" | 2'-7" | 0'-5 1/2" | 0'-4 1/2" | 5'-6 1/2" | | | |
| 5A21 | 26 | #5 | 5'-2" | 3 | 2'-7" | 2'-7" | 2'-7" | 2'-7" | 2'-7" | 0'-3" | 2'-6 1/2" | 5'-1 1/2" | | | |
| 5A22 | 22 | #5 | 7'-1" | 3 | 2'-7" | 1'-11" | 2'-7" | 1'-11" | 2'-7" | 1'-4 1/2" | 1'-3 1/2" | 6'-3 1/2" | | | |
| 5A23 | 21 | #5 | 6'-11 1/2" | 3 | 2'-7" | 1'-8 1/2" | 2'-7" | 1'-8 1/2" | 2'-7" | 1'-3 1/2" | 1'-2 1/2" | 6'-4 1/2" | | | |
| 5A24 | 21 | #5 | 6'-10" | 3 | 2'-7" | 1'-8" | 2'-7" | 1'-8" | 2'-7" | 1'-1 1/2" | 1'-2 1/2" | 6'-3 1/2" | | | |
| 5A25 | 21 | #5 | 6'-9" | 3 | 2'-7" | 1'-8" | 2'-7" | 1'-8" | 2'-7" | 1'-1 1/2" | 1'-3 1/2" | 6'-3" | | | |
| 5A26 | 4 | #5 | 2'-7 1/2" | 3 | 2'-7" | 1'-5 1/2" | 2'-7" | 1'-5 1/2" | 2'-7" | 1'-0 1/2" | 0'-11 1/2" | 6'-2" | | | |
| 5A27 | 21 | #5 | 6'-4 1/2" | 3 | 2'-7" | 1'-4" | 2'-7" | 1'-4" | 2'-7" | 0'-11 1/2" | 6'-1" | 6'-1" | | | |
| 5A28 | 21 | #5 | 6'-4 1/2" | 3 | 2'-7" | 1'-2 1/2" | 2'-7" | 1'-2 1/2" | 2'-7" | 0'-10 1/2" | 0'-9 1/2" | 6'-0" | | | |
| 5A29 | 21 | #5 | 6'-3 1/2" | 3 | 2'-7" | 1'-1" | 2'-7" | 1'-1" | 2'-7" | 0'-9 1/2" | 0'-8 1/2" | 5'-11" | | | |
| 5A30 | 21 | #5 | 6'-2" | 3 | 2'-7" | 0'-11 1/2" | 2'-7" | 0'-11 1/2" | 2'-7" | 0'-8 1/2" | 0'-7 1/2" | 5'-10" | | | |
| 5A31 | 4 | #5 | 6'-0 1/2" | 3 | 2'-7" | 0'-10 1/2" | 2'-7" | 0'-10 1/2" | 2'-7" | 0'-7 1/2" | 0'-6 1/2" | 5'-9" | | | |
| 5A32 | 21 | #5 | 5'-11" | 3 | 2'-7" | 0'-8 1/2" | 2'-7" | 0'-8 1/2" | 2'-7" | 0'-6 1/2" | 0'-5 1/2" | 5'-8" | | | |
| 5A34 | 1763 | #5 | 3'-5" | 2 | 0'-10" | 2'-7" | 2'-7" | 2'-7" | 2'-7" | 2'-7" | 2'-7" | | | | |
| 5A35 | 80 | #5 | 6'-8 1/2" | 17 | 3'-4" | 3'-4" | 3'-4" | 3'-4" | 3'-4" | 3'-4" | 3'-4" | | | | |
| 5A36 | 10 | #5 | 8'-2" | 17 | 3'-4" | 4'-10" | | | | | | | | | |
| 5A37 | 10 | #5 | 6'-8 1/2" | 17 | 2'-7" | 3'-11" | | | | | | | | | |
| 5A38 | 8 | #5 | 11'-2 1/2" | 54 | 2'-7" | 2'-7 1/2" | 2'-6 1/2" | 2'-7 1/2" | 2'-7 1/2" | 0'-10" | | | | | |
| 5A39 | 8 | #5 | 12'-10" | 54 | 2'-7" | 2'-6 1/2" | 2'-6 1/2" | 2'-6 1/2" | 2'-6 1/2" | 2'-7" | | | | | |
| 5A40 | 4 | #5 | 7'-3 1/2" | 17 | 2'-5 1/2" | 2'-5 1/2" | 2'-5 1/2" | 2'-5 1/2" | 2'-5 1/2" | 1'-4 1/2" | | | | | |
| 5A41 | 97 | #5 | 10'-2 1/2" | 20 | 2'-7" | 5'-9 1/2" | 2'-7" | 5'-9 1/2" | 2'-7" | 5'-9 1/2" | 2'-7" | | | | |
| 5A42 | 80 | #5 | 11'-8 1/2" | 20 | 3'-4" | 5'-0 1/2" | 3'-4" | 5'-0 1/2" | 3'-4" | | | | | | |
| 5A43 | 20 | #5 | 6'-2" | 2 | 0'-10" | 5'-4" | | | | | | | | | |
| 5A44 | 21 | #5 | 8'-4 1/2" | HDB | 1'-9" | 1'-2 1/2" | 1'-0" | 0'-5" | 1'-0" | 1'-2 1/2" | 1'-9" | 0'-10" | | | |
| 5A45 | 156 | #5 | 5'-7" | 2 | 0'-10" | 4'-8" | | | | | | | | | |
| 5A46 | 8 | #5 | 7'-4" | 2 | 0'-10" | 6'-8" | | | | | | | | | |
| 5A47 | 38 | #5 | 8'-4 1/2" | HDB | 1'-9" | 1'-2 1/2" | 1'-0" | 0'-5" | 1'-0" | 1'-2 1/2" | 1'-9" | 0'-10" | | | |
| 5A48 | 914 | #5 | 6'-5 1/2" | 3 | 1'-9" | 1'-2 1/2" | 0'-6 1/2" | 1'-2 1/2" | 1'-9" | 0'-10 1/2" | 0'-9 1/2" | 5'-8 1/2" | | | |
| 5A49 | 2 | #5 | 7'-4 1/2" | 20 | 2'-7" | 2'-4 1/2" | 2'-7" | 2'-4 1/2" | 2'-7" | | | | | | |
| 5A50 | 8 | #5 | 5'-2" | 3 | 2'-7" | 2'-7" | 2'-7" | 2'-7" | 2'-7" | 1'-10 1/2" | 1'-9 1/2" | 4'-4 1/2" | | | |
| 5A51 | 4 | #5 | 9'-3 1/2" | 20 | 2'-7" | 4'-1 1/2" | 2'-7" | 4'-1 1/2" | 2'-7" | | | | | | |
| 5A52 | 10 | #5 | 6'-11 1/2" | 20 | 2'-7" | 1'-9 1/2" | 2'-7" | 1'-9 1/2" | 2'-7" | | | | | | |
| 5A53 | 4 | #5 | 9'-10 1/2" | 20 | 3'-5" | 4'-0 1/2" | 2'-7" | 4'-0 1/2" | 2'-7" | | | | | | |
| 5A54 | 21 | #5 | 8'-4" | 20 | 2'-7" | 2'-7" | 2'-7" | 2'-7" | 2'-7" | | | | | | |
| 5A55 | 18 | #5 | 7'-8 1/2" | 20 | 2'-7" | 2'-8 1/2" | 2'-7" | 2'-8 1/2" | 2'-7" | | | | | | |
| 5A56 | 21 | #5 | 7'-5 1/2" | 20 | 2'-7" | 2'-3 1/2" | 2'-7" | 2'-3 1/2" | 2'-7" | | | | | | |
| 5A57 | 1 | #5 | 4'-11" | 17 | 2'-7" | 2'-10" | | | | | | | | | |
| 5A58 | 1 | #5 | 4'-8 1/2" | 17 | 2'-3" | 2'-5" | | | | | | | | | |
| 5A59 | 1 | #5 | 4'-8 1/2" | 17 | 2'-3" | 2'-3" | | | | | | | | | |
| 5A60 | 4 | #5 | 4'-9" | 2 | 0'-10" | 5'-1" | | | | | | | | | |
| 5A61 | 2 | #5 | 4'-7" | 2 | 0'-10" | 2'-5" | | | | | | | | | |
| 5A62 | 6 | #5 | 3'-11" | 2 | 0'-10" | 2'-3" | | | | | | | | | |
| 5A63 | 2 | #5 | 7'-5" | 2 | 0'-10" | 6'-5" | | | | | | | | | |
| 5A64 | 8 | #5 | 4'-8 1/2" | 2 | 0'-10" | 2'-10" | | | | | | | | | |
| 5A65 | 4 | #5 | 5'-11" | 2 | 0'-10" | 4'-3" | | | | | | | | | |
| 5A66 | 2 | #5 | 6'-8 1/2" | 2 | 0'-10" | 5'-8" | | | | | | | | | |
| 5A67 | 1 | #5 | 6'-1" | 2 | 0'-10" | 5'-3" | | | | | | | | | |
| 5A68 | 1 | #5 | 6'-7" | 2 | 0'-10" | 5'-9" | | | | | | | | | |
| 5A69 | 2 | #5 | 10'-4" | 20 | 2'-7" | 5'-2" | 2'-7" | 5'-2" | 2'-7" | | | | | | |
| 5A72 | 2 | #5 | 9'-2 1/2" | 20 | 2'-7" | 4'-0 1/2" | 2'-7" | 4'-0 1/2" | 2'-7" | | | | | | |
| 5A79 | 4 | #5 | 4'-8 1/2" | 2 | 0'-10" | 5'-0" | | | | | | | | | |
| 5A81 | 84 | #5 | 3'-10" | 2 | 0'-10" | 3'-0" | | | | | | | | | |
| 5A85 | 2 | #5 | 2'-11" | 2 | 0'-10" | 1'-5" | | | | | | | | | |
| 5A86 | 2 | #5 | 2'-11" | 2 | 0'-10" | 2'-1" | | | | | | | | | |
| 5A87 | 2 | #5 | 3'-2" | 2 | 0'-10" | 2'-4" | | | | | | | | | |
| 5A88 | 2 | #5 | 2'-4" | 2 | 0'-10" | 1'-4" | | | | | | | | | |
| 5A90 | 20 | #5 | 6'-8 1/2" | 3 | 3'-4" | 3'-4" | | | | | 0'-2 1/2" | 3'-4" | 6'-8" | | |
| 5A103 | 1 | #5 | 3'-9" | 2 | 0'-10" | 2'-11" | | | | | | | | | |
| 5A104 | 1 | #5 | 4'-7" | 2 | 0'-10" | 3'-9" | | | | | | | | | |
| 5A107 | 1 | #5 | 4'-0" | 2 | 0'-10" | 3'-2" | | | | | | | | | |
| 5A108 | 1 | #5 | 4'-10" | 2 | 0'-10" | 4'-0" | | | | | | | | | |



LAP SCHEDULE (CLASS-B)
REF: 10/S500

| SIZE | 4000 PSI | |
|------|----------|-------|
| | TOP | OTHER |
| #3 | 24" | 18" |
| #4 | 32" | 25" |
| #5 | 40" | 31" |
| #6 | 48" | 37" |
| #7 | 70" | 54" |
| #8 | 80" | 62" |
| #9 | 90" | 69" |

ABBREVIATIONS

| | |
|------------|------|
| TOP | - |
| BOTTOM | BOT |
| TOP&BOTTOM | T&B |
| CONTINUOUS | CONT |
| FACE BAR | - |
| CORNER BAR | COR |
| VERTICAL | VERT |
| HORIZONTAL | HOR |
| STIRR | |